

VAISHAL PATLIPUTRA DUGDH UTPADAK SAHKARI SANGH LTD

PATNA DAIRY PROJECT

Feeder Balancing Dairy Complex, Phulwarisharif, Patna - 801505

Phone 0612-2252553,2252542, 2251622, Fax 2250325

E.mail:vpmunin@gmail.com

PDP/PUR/ 2124

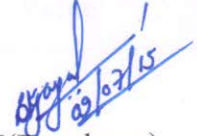
Dated-09/07/2015

SHORT TENDER NOTICE

Quotation are invited for Supply & Installation of Power Distribution Panel of New Cattle Feed Plant. Scope of work is as per Annexure enclosed.

Interested parties may send their Quotation latest by 20/07/2015 by 5.00 P M in a sealed envelope addressed to Managing Director, VPDUSS Ltd. superscribing on the envelope "Quotation for Supply & Installation of Power Distribution Panel of New Cattle Feed Plant".

Yours Faithfully,



AGM(Purchase)

- Note :
- 1) The rates should be all inclusive FOR CFF
 - 2) For any clarification bidder may contact Manager,CFF.
FBD before quoting
 - 3) Taxes should be bifurcated clearly in the Quotation
 - 4) Xerox of Tax (Service tax/VAT/CST etc. may be attached with the offer)

CC : Manager,FBD/CFF
: Incharge , HCC/BCC
: Incharge,Accts,Hq
: Notice Board , FBD
: website : patnadairy.org

ANNEXURE

A

Sl.No.	Scope of work	Qty /Unit	Rate	Value
1	ACB 1250 A, 4 Pole, 50 KA with ROM (L&T /Schneider)	1 No		
2	Indicating Lamp LED (ESBEE)	6 Nos		
3	MCB 6 AMP SP (L&T)	2 Nos		
	Sub Total			
	Applicable Taxes			
	Total			

B

Change over switch

Sl.No.	Scope of work	Qty /Unit	Rate	Value
1	Changeover switch 1250 A, 4 P on load (L&T / Crystal/HPL)	1 No.		
2	Ammeter 0-1200 96x96 (AE)	1 No.		
3	Voltmeter 0-500 96 x 96 (AE)	1 No		
4	CT Coil 1200 / 5 A (Kappa)	3 Nos		
5	Amp selector switch (KAYCEE)	1 Nos		

6	Volt selector switch (KAYCEE)	1 Nos		
7	Indicating Lamp LED (ESBEE)	3 Nos		
8	SP MCB 6 A (L&T)	3 Nos		
	SubTotal			
	Applicable Taxes			
	Total			

C
Outgoing

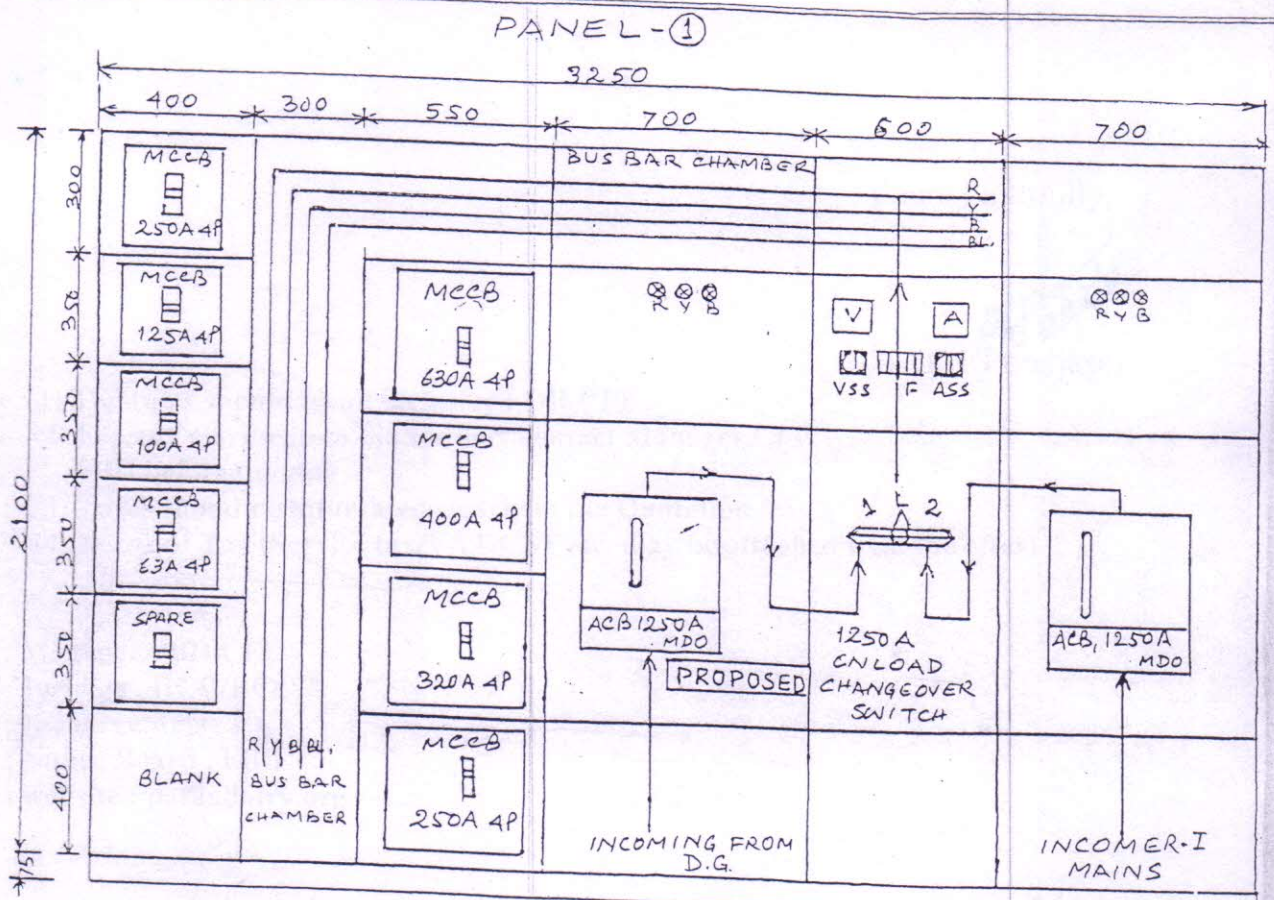
Sl.No.	Scope of work	Qty /Unit	Rate	Value
1	MCCB 630A 50 KA with ROM (L&T/Crystal/Havells)	1 Nos		
2	MCCB 400A 35 KA (L&T/Havells/Crystal)	1 No		
3	MCCB 320A50 (L&T/Havells/Crystal)	1 No		
4	MCCB 250A 35 KA (L&T/Havells/Crystal)	2 No		
5	MCCB 125A 35 KA (L&T/Havells/Crystal)	1 No		
6	MCCB 100A 35 KA (L&T/Havells/Crystal)	1 No		
7	MCCB 63A 35 KA (L&T/Havells/Crystal)	1 No		
	Sub Total			
	Applicable Taxes			
	Total			

B

D

Other mise items

Sl.No.	Scope of work	Qty /Unit	Rate	Value
1	Busbar copper strip 100 x 10, 25 x 5	80 kg		
2	Busbar support 4" & 1"	64 Nos		
3	Multistrand copper conductor wire 1.5 mm ² (Havells/Finolex/Polycab)	1 Coil		
4	Copper thimble 1.5mm ²	50 Nos		
5	Cable tie 150 mm	2 Pkt		
6	PVC Sleeve RYB Black	50 mtr		
7	PVC Tape (Champion)	8 Roll		
8	Panel cooling fan	2 Nos		
9	Hardwares GI Bolt nut washer	5 kg		
	Cabinet 3250 x 2175 10'x6'6"	66 sft		
	Misc. items	LS		
	SubTotal			
	Applicable Taxes			
	Total			
	SUB TOTAL (A+B+C+D)			
	DISCOUNT			
	TOTAL			
	Labour charges for fitting , assembling , internal wiring , painting , reflection and connection of panel etc			
	Design , drawing quality assurance , trial run and commissioning etc.			
	Installation Charges			
	GRAND TOTAL			



FRONT VIEW
POWER DISTRIBUTION PANEL FOR NEW PLANT.
 DIMENSION-3250X2100X100MM

B.