

VAISHAL PATLIPUTRA DUGDH UTPADAK SAHKARI SANGH LTD

# PATNA DAIRY PROJECT

Feeder Balancing Dairy Complex, Phulwarisharif, Patna – 801505

Phone – 0612-2252553, 2252542, 2251622, Fax-2250325

Email :- vpmu.pur@gmail.com

PDP: PUR:

3775

Dated: 21.09.2021

## TENDER NOTICE

Sealed Tender is invited from experienced party for **civil work for construction of a new whole day booth at Srikrishnapuri Park**. The details scope of work as per BOQ and Booth diagram is attached herewith.

Interested parties may submit their quotation latest by 05.10.2021 by 5.00 pm in sealed envelope addressed to Managing Director, VPDUSS Ltd., Patna super scribing on the top of the envelope Tiles "**Construction of a new whole day booth at Srikrishnapuri Park Patna**"

Bidder must be registered for civil work in Bihar Govt or COMFED, Patna.



Manager (MM)

Enclosure: As above

Note: 1) The rate should be all inclusive FOR FBD  
2) All the legal document i.e. Photo, ID Proof  
Service Tax papers, etc (Xerox is to be enclosed)

CC: Notrice Board, FBD, CFF, HCC  
Patnadairy.org

## BILL OF QUANTITIES

**WORK:- Civil work for construction of a new whole day booth at Sri Krishna Puri Park**  
**RATES ARE BASED ON BCD SOR-01.07.2020**

SL.	BSOR-2020	DESCRIPTION OF ITEM	UNIT	QUANTITY	RATE	AMOUNT
<b>SECTION -1.0 [ FOUNDATION &amp; PLINTH WORKS]</b>						
1	20.2	Boring, Providing and installing cast in situ single under reamed pile of specified diameter and length below pile cap in M-25 cement concrete, to carry a safe working load not less than specified, excluding the cost of steel reinforcement but including the cost of boring with bentonite solution and the length of the pile to be embedded in pile cap etc. all complete. (Length of pile for payment shall be measured upto to the bottom of pile cap) :				
	20.3.1	300 mm dia piles metre	Mtr.	16.00	2074.00	33,184.00
2	2.8	Earth work in excavation in foundation trenches or drains(not exceeding 1.5 m in width or 10 sqm on plan) including dressing of sides and ramming of bottoms, lift upto 1.5 m . including getting out the excavated soil and disposal of surplus excavated soil as directed, within a lead of 50 m.				
	2.8.1	All Kinds of soil cum	Cum.	1.89	360.70	680.64
3	2.28	Supplying and Filling in plinth with local sand and under floors including, watering, ramming consolidating and dressing complete.	Cum.	5.342	281.40	1,503.24
4	6.1A	Brick work with bricks of class designation 100A in foundations and plinth in :				
5	6.1.14A	Cement mortar 1:6 (1 cement:6 coarse sand )	Cum	4.401	4849.20	21,341.33
	6.1.14A+6.3A	Above plinth level	Cum	7.302	5641.00	41,190.58
6	11.72	Providing & laying designation 100 A one brick flat soling joints filled with local sand including cost of watering, taxes, royalty all complete as per building specification and direction of E/I,	Sqm	19.49	285.20	5,558.55
<b>SECTION -2.0 [ R.C.C WORK ABOVE PLINTH UP TO V LVL.]</b>						
7	5.33A	Providing and laying in position machine batched, machine mixed and machine vibrated design mix cement concrete of specified grade for reinforced cement concrete structural elements, excluding the cost of centring, shuttering finishing and reinforcement, M-20 grde reinforcd cement concrete				
8	5.33.1	All works upto plinth level [ including hardpark)	Cum	1.513	4689.20	7,094.76
9	5.33A.2	All works above plinth level				
10	5.33A.2.1	Walls columns, pillars, posts and struts	Cum	2.15	5194.80	11,168.82
11	5.33A.2.2	Beams, plinth beams, girders, bressumers, cantilevers, Suspended floors lintels roofs and staircases including spiral staircases, shelves etc.	Cum	7.85	5553.60	43,595.76
12	5.9	Centring and shuttering including strutting, propping etc. and removal of form for.				
13	5.9.6	Columns, Pillars, Piers, Abutments, Posts and Struts	Sqm.	34.88	470.60	16,414.53
14	5.9.16	Edge of Slabs and breaks in floors and wall	Mtr.	1.50	126.80	190.20
15	5.9.20	Suspended floors, roots, landings, balconies and access platform. With water proofing 12 mm thick ply.	Sqm.	39.89	508.60	20,285.51
16	5.9.21	Lintels, beams, plinth beams, girders, ressumers and cantilevers. With water proofing 12 mm thick ply.	Sqm.	21.90	486.70	10,658.73

17	5.22	Reinforcement for R.C.C. work including straightening, cutting, bending, placing in position and binding all complete.				
18	5.29.7A	Thermo-Mechanically Treated bars TMTC-500 - 8mm dia.	Kg.	558.26	70.60	39,413.14
19	5.29.7B	Thermo-Mechanically Treated bars TMTC-500- 10mm dia.	Kg.	65.22	69.20	4,513.50
20	5.29.7C	Thermo-Mechanically Treated bars TMTC-500-12mm dia.	Kg.	246.00	67.60	16,629.33
21	P-202/13.11.4	12 mm cement plaster 1:6(1 cement : 6 coarse sand) on exterior of partition wall	SQM	39.41	134.5	5300.645
22	P-203/13.24.2	6 mm cement plaster 1:4(1cement : 4 Coarse sand)	SQM	32.19	119.1	3833.829
23	P-203/13.26	Neat cement punning	SQM	15.21	38.9	591.669
24	P-207/13.80A.2	Providing and applying white cement based putty of average thickness of 2mm,of approved brand and manufacturer,over the plastered wall surface to prepare the surface even and smooth complete	SQM	56.39	102.1	5757.419
24	P-180/11.41.2	Providing and laying vitrified floor tiles in sizes of 60x60cm conforming to IS:15622 with water absorption less than 0.08% laid on 20mm thick cement mortar 1:4(1cement:4 Coarse sand) including grouting the joint with white cement and matching pigments etc. complete	SQM	13.69	1731.4	23702.866
25	P-179/11.36	Providing and fixing 1st quality ceramic glazed wall tiles 300x300 mm of 1st quality conforming to IS: 15622(thickness to be specified by the manufacture) of approved make in all colours ,shades except burgundy,bottle green,black of any size as approved by Engineer in charge in skirting, riser of steps and dados over 12 mm thick bed of cement mortar 1:3(1 cement:3 Coarse Sand) and jointing with grey cement slurry @ 3.3 kg/sqm including pointing in white cement mixed with pigment of matching shade complete	SQM	17.44	797.5	13908.4
26	P-181/11.46.1	providing and laying vitrified tiles in different sizes (thickness to be specified by manufacturer) with water absorption less than 0.08% and conforming to IS 15622 of approved make in all colours & shade in skirting,vertical surface over 12 mm thick bed of cement mortar 1:3(1 cement: 4 coarse sand) including pointing of joints with white cement and matching pigment etc. complete	SQM	50.96	1076.7	54868.632
27	P-188/12.33A	Providing and laying pressed clay tiles(as per approved pattern 20 mm nominal thickness and of approved size)on roof jointed with with cement mortar 1:4(1 cement: 4 coarse sand) mixed with 2% integral water proofing compound by weight of cement,over a bed of 20 mm layer of cement mortar 1:4 and finished neat complete	SQM	16.65	493.4	8215.11
28	P-204/13.48.1	Finishing with Deluxe Multi surface paint system for interiors and exteriors using Primer as per manufacturers specifications.	SQM	56.39	104.7	5904.033
29	P-305/21.1.1.2	providing and fixing powder coated aluminium work for doors,windows,ventilators and partitions with extruded built up standard tubular sections/appropriate Z sections and other sections of approved make conforming to IS: 733 and IS:1285,fixing with dash fasteners of required dia and size,including necessary filling up the gaps at junctions,i.e. at top,bottom and sides with required EPDM rubber/neoprene gasket etc. aluminium sections shall be smooth,rust free,straight,mitred,and jointed mechanically wherever required including cleat angles,aluminium snap beading for glazing/aneling,c.p brass/stainless steel screws,all complete as per architectural drawings and the directions of Engineer-In-Charge(glazing,paneling and dash fasteners to be paid separately.for fixed portion	Kg.	10.926	414.7	4531.0122
30	P-306/21.3.3	Providing and fixing glazing in aluminium door,windows,ventilator shutters and partitions etc. with EPDM RUBBER/neoprene gasket etc. complete as per architectural drawings and directions of engineer-in-charge with float glass panes of 5.50 mm thickness	Sqm	5.76	1110.2	6394.752
31	P-123/8.2.2.2	Providing and fixing granite of any colour and shade(preferably jet black high gloss) of 18 mm thick gang saw cut,mirror polished,premoulded and pre polished ,machine cut for kitchen platforms,vanity counters>window sills,facias and similar loactions of required size,approved shade,colour and texture laid over 20mm thick base cement mortar 1:4(1 cement:4 coparse sand)joints treated with white cement,mixed with matching pigment,epoxy touch ups,including rubbing,curing,moulding and polishing to edges to give high gloss finish etc. all complete at all levels. for area of slab above 0.5sqm	Sqm	3.85	4028.5	15509.725

32	P-124/8.10.2	Providing and fixing granite of any colour and shade(preferably jet black high gloss) of 8 mm thick for wall lining over 12 mm thick bed of cement mortar 1:3(1cement:3 coarse sand) and cement slurry @3.3kg/sqm including pointing in white cement complete	Sqm	3.6	2059.8	7415.28
33	P-168/10.6.2	supplying and fixing rolling shutters of approved make made of required size OF MS laths interlocked together through their entire length and jointed together at the end by end locks mounted on specially designed shaft with brackets,side guides and arrangements for inside and outside locking with push and pull operation complete including the cost of providing and fixing necessary 27.5 cm long wire springs manufactured from high tensile steel wire of adequate strength conforming to IS :4544-PART-01 and MS top cover of required thickness for rolling shutters from with 80x1.20 mm MS laths with 1.20 mm thick top cover	Sqm	3.125	2509.7	7842.8125
34	P-168/10.5.1	Providing and fixing 1mm thick M.S sheet door with frame of 40x40x6 mm angle iron and 3mm MS gusset plates at the junction and corners all necessary fittings complete including applying a priming coat of approved steel primer using MS angle 40x40x6 mm for diagonal braces	Sqm	2.52	3177.5	8007.3
35	P-171/10.32.2	Steel work welded in built up sections/framed work including cutting,hoisting,fixing in position and applying a priming coat of approved steel primer using structural steel in gratings,frames,guard bar,ladders,railings,brackets & similar works (18Kg/sqm)	Kg	114	99.5	11343
36	P-177/11.20.3	Chequerred precast cement concrete tiles of dark shade using ordinary cement of 22 mm thick with marbie chips of size 6 mm in footpath & courtyard jointed with neat cement slurry mixed with pigment to match the shade of tiles including rubbing and cleaning etc. complete on 20mm thick bed of cement mortar 1:4(1cement:4 Coarse Sand)	SQM	8.97	742.9	6663.813
37	P-222/15.7.4	Demolishing brick work in cement mortar including stacking of serviceable material and disposal of unserviceable material within 50metres lead	Cum	3	773.5	2320.500
38	P-222/15.2.1	Demolishing cement concrete of 1:3:6 or richer mix including disposal of material within 50metres lead	Cum	0.3	911.4	273.420
	D/A	Electrical charges				21,470.40
		Contingencies charges(LUMPSUM)				5,000.00
38	D/A	Carriage of materials				-
1	A	Carriage of Materials				
	a	Graded Stone aggregate 190 km.	Cum.	8.971	2724.70	24,443.28
	b	Coarse sand 31 km.	Cum.	10.405	606.78	6,313.55
	c	Bricks 8km	1000No.	6.410	899.20	5,763.87
	d	Reinforcement (Steel)	Tonne	0.870	214.70	186.79
	e	Cement	Tonne	4.823	214.70	1,035.50
	f	Local Sand	Cum	5.342	297.66	1,687.71
2	B	Difference of Cost of Materials				-
	I	Bricks	1000No.	6.410	1449.00	9,288.09
	II	Cement	Tonne	4.823	214.70	1,035.50
<b>GRAND TOTAL</b>						Rs. 542,031.52

In words: Rs Five Lakh Forty Two Thousand Thirty One only

I AGREE & READY TO DO THIS WORK

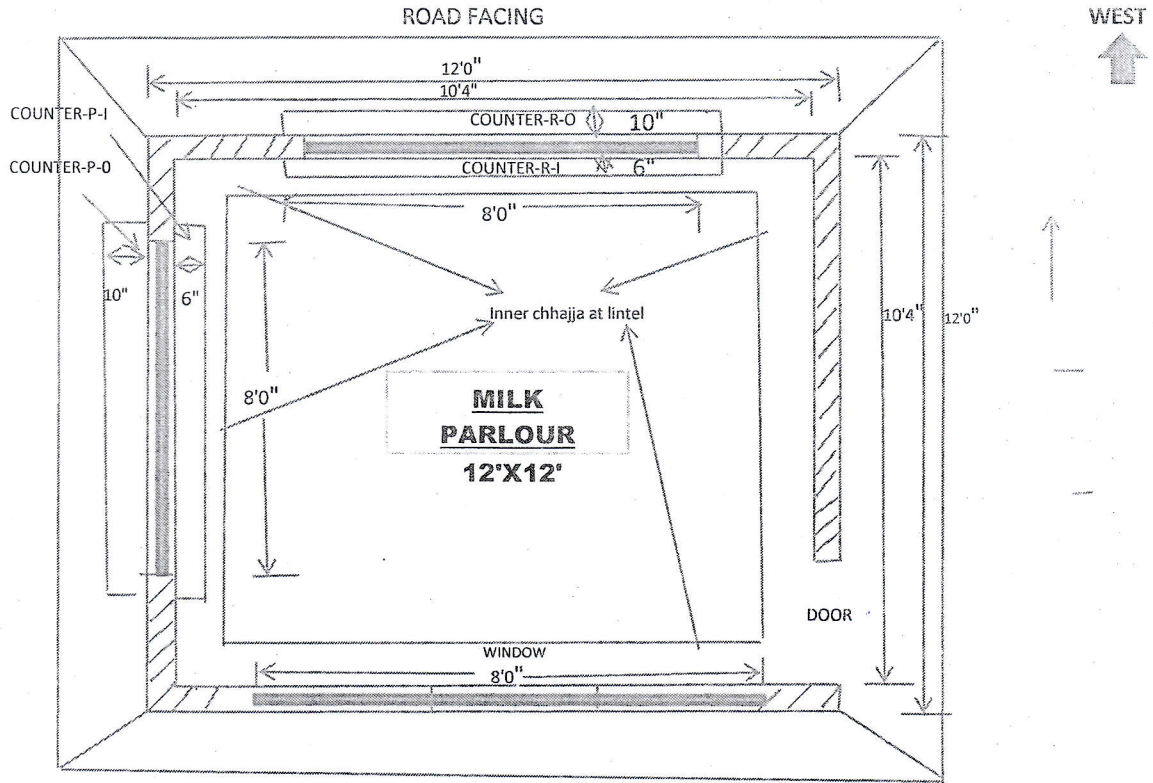
		In Numeric value(%)	In words
1.O	ON THE GIVEN B.O.Q RATE		
2.O	ABOVE THE B.O.Q RATE(PRESENT)		
3.O	BELOW THE B.O.Q RATE(PRESENT)		



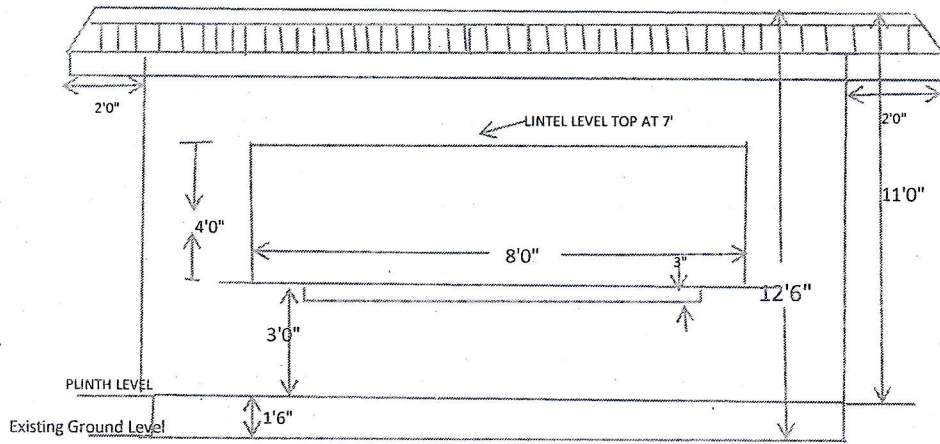
Signature of client with seal

Signature of contractor with seal

**ARCHITECTURAL DRAWINGS OF A NEW WHOLE DAY MILK PARLOUR AT SRI  
KRISHNAPURI PARK, BORING ROAD**



**PROPOSED PLAN OF MILK PARLOUR**



**PROPOSED FRONT ELEVATION (FROM ROAD SIDE) OF MILK PARLOUR**

*Handwritten signature*

*Handwritten signature*