

VAISHAL PATLIPUTRA DUGDH UTPADAK SAHKARI SANGH LTD

PATNA DAIRY PROJECT

Feeder Balancing Dairy Complex, Phulwarisharif, Patna – 801505

Phone – 0612-2252553, 2252542, 2251622, Fax-2250325

Email :- vpmu.pur@gmail.com

PDP: PUR: 7493

Dated: 29.02.2024

TENDER NOTICE

Sealed Tender is invited from experienced party for **Civil construction work Salt Platform with Truss Roof at Hajipur Dairy, Hajipur**. The details scope of work as per BOQ and diagrams attached herewith.

Interested parties may submit their quotation latest by 20.03.2024 by 5.00 pm in sealed envelope addressed to Managing Director, VPDUSS Ltd., Patna super scribing on the top of the envelope Tiles "**Civil construction work Salt Platform with Truss Roof at Hajipur Dairy, Hajipur.**"

Bidder must be registered for civil work in Bihar Govt or COMFED, Patna.



Manager (MM)

Enclosure: As above

- Note: 1) The rate should be all inclusive FOR FBD
2) All the legal document i.e. Photo, ID Proof
Service Tax papers, etc (Xerox is to be enclosed)

CC: Notrice Board, FBD, CFF, HCC
Patnadairy.org

BILL OF QUANTITY

CIVIL CONSTRUCTION WORK OF SALT PLATFORM WITH TRUSS ROOF AT HAJIPUR DAIRY

PROJECT, HAJIPUR.

SIZE: 5.80 X3.96X3.05

A	B	C	D	E	F	G	H	I	J	K	L	M	N	O	P
SL.	CODE	DESCRIPTION OF ITEM	NO.	LENGTH	WIDTH	DEPTH	QUANTITY	UNIT	RATE	AMOUNT	STONE	SAND	CEMENT	BRICKS	STEEL
1	2.8	Earth work in excavation in foundation trenches or drains(not exceeding 1.5 m in width or 10 sqm on plan) including dressing of sides and ramming of bottoms, lift upto 1.5 m . including getting out the excavated soil and disposal of surplus excavated soil as directed, within a lead of 50 m													
5		COLUMN FOUNDATION	6	1.50	1.50	1.200	16.20								
6		TIE BEAM	2	5.05	0.40	0.300	1.21								
7			2	3.459	0.40	0.30	0.83								
8							18.24	Cum.	360.70	Rs. 6,579.17					
9															
2	2.28	Supplying and Filling in plinth with local sand and under floors including, watering, ramming consolidating and dressing complete.													
11		FOUNDATION BED	6	1.50	1.50	0.10	1.35								
12		UNDER FLOOR	2	5.30	3.46	0.30	11.00								
13							12.35	Cum.	287.30	Rs. 3,548.16					
14															
3	11.72	Providing designation 100 A one brick flat soling joints filled with local sand including cost of watering, taxes, royalty all complete as per building specification and direction of E/I,													
16		FOUNDATION BED	6	1.35	1.35		10.94								
17		The beam T1	2	5.05	0.25		2.53								
18		The beam T2	3	3.459	0.25		2.59								
19		UNDER FLOOR	1	5.30	3.460		18.34								
20							0.00								
21		TOTAL					34.40	Sqm.	283.30	Rs. 9,745.52		0.58		1109.00	
22															

BILL OF QUANTITY

A	B	C	D	E	F	G	H	I	J	K	L	M	N	O	P
SL.	CODE	DESCRIPTION OF ITEM	NO.	LENGTH	WIDTH	DEPTH	QUANTITY	UNIT	RATE	AMOUNT	STONE	SAND	CEMENT	BRICKS	STEEL
23	4	4.1 Providing and laying in position cement concrete of specified grade excluding the cost of centring and shuttering-all work upto plinth level.													
24	4.1.5	1:3:6 (1 Cement: 3 coarse sand : 6graded stone aggregate 20 mm nominal size)													
25		Foundation	6	1.35	1.35	0.075	0.82								
26		UNDER FLOOR	1	5.30	3.460	0.10	1.83								
27		TOTAL					2.65	Cum.	3434.00	Rs. 9,100.10	2.49	1.25	0.85		
28															
29	5	5.1 Providing and laying in position specified grade of reinforced cement concrete excluding the cost of centring, shuttering,finishing and reinforcement- All work upto plinth level													
30	5.1.2	1:1.5:3 (1 cement:1.5 coarse sand:3 graded stone aggregate 20mm nominal size)													
31		RCC IN FOUNDATION	6	1.20	1.20	0.15	1.30								
32		$H/3(a^2+b^2)+(\sqrt{a^2+b^2})$	0.2	1.44	0.16	0.48	0.02								
33		Tie beam T1	2	5.05	0.25	0.40	1.01								
34		Tie beam T2	2	3.460	0.25	0.40	0.69								
35		column	6	0.25	0.25	2.20	0.83								
36		band-B1 4-12Ø	2	5.05	0.25	0.15	0.38								
37		band-b2 4-12Ø	2	3.46	0.25	0.15	0.26								
38		TOTAL					4.49	Cum.	4688.30	Rs. 21,050.47	3.82	1.91	2.74		
39															
40	6	5.22 Reinforcement for R.C.C. work including straightening, cutting, bending, placing in position and binding all complete.													
41		FOUNDATION FOOTING													
42	5.22.7C	11-12Ø BOTHWAY DOUBLE LAYER	6	22	1.25	165.00	0.888			146.52					
43		TIE BEAM-T1 6-12Ø	2	6	5.20	62.40	0.888			55.41					
44		extra at top	2	4	2.05	16.40	0.888			14.56					
45		both end	2	4	1.50	12.00	0.888			10.66					
46		TIE BEAM-T2 6-12Ø	2	6	4.36	52.32	0.888			46.46					
47			2	4	1.50	12.00	0.888			10.66					
48		Column	6	8	2.80	134.40	0.888			119.35					
49							12Ø		403.62	90.80	Rs. 36,648.70				0.404

BILL OF QUANTITY

A	B	C	D	E	F	G	H	I	J	K	L	M	N	O	P
SL.	CODE	DESCRIPTION OF ITEM	NO.	LENGTH	WIDTH	DEPTH	QUANTITY	UNIT	RATE	AMOUNT	STONE	SAND	CEMENT	BRICKS	STEEL
3															
50															
51	5.22.7B	10DIA TOR 4-NO IN PLINTH BAND													
52		band-B1 4-10Ø	2	4	5.95	47.60	0.617	29.37							
53		band-b2 4-10Ø	2	4	4.11	32.88	0.617	20.29							
54							10Ø	49.66	92.60	Rs. 4,598.52					
55															
56	7	8Ø RINGS 150C/C													
57		Tie Beam T1 250 X 300	2	39	1.15	89.70	0.395	35.43							
58		Tie Beam T2 250 X 300	2	21	1.15	48.30	0.395	19.08							
59		Columns	6	13	0.75	58.50	0.395	23.11							
60			6	26	0.35	53.82	0.395	21.26							
61		band-B1 4-12Ø	2	21	0.75	31.50	0.395	12.44							
62		band-b2 4-12Ø	2	23	0.96	44.16	0.395	17.44							
63															
64							8Ø	128.76	94.50	Rs. 12,167.82					0.129
65		CENTERING SHUTTERING													
66	8	5.9.1 Foundations, footings, bases of columns etc. for mass concrete.													
67		PCC 1:3:6 PERIMETER	6	1.35	1.35	0.10	3.24	Sqm.							
68		RCC 1:1.5:3 bed	6	1.20	1.20	0.15	4.32	Sqm.							
69							7.56	Sqm.	211.60	Rs. 1,599.70					
70															
71	9	5.9.6 Columns, Pillars, Piers, Abutments, Posts and Struts													
72		PEDESTAL/ COLUMN	6	0.25	0.25	2.200	13.20	Sqm.	494.40	Rs. 6,526.08					
73							13.20	Sqm.							
74	10	5.9.5 Lintels, beams, plinth bams, griders, brassumers and conlivers.													
75		T1 [SIDE 0.40*2]	2	5.30		0.300	3.18								
76		T2 [SIDE 0.40*2]	2	3.960		0.300	2.38								
77		band B1	2	5.30		0.150	1.59								
78			2	3.960		0.150	1.19								
79							8.34	Sqm.	404.70	Rs. 3,375.20					
80	11	6.1.14A Brick works up to plinth	2	5.30	0.25	0.450	1.19								
81			2	3.96	0.25	0.450	0.89								
82							2.08	Cum.	4819.90	Rs. 10,025.39		0.5616	2.0175	1027.52	
83															
84	12	6.1.14A + Brick works ABOVE plinth	2	5.30	0.25	1.050	2.78								
85		6.4A	1	3.96	0.25	1.050	1.04								
86							3.82	Sqm.	5662.10	Rs. 21,629.22		0.10314	0.17763	215.83	
87		FINISHING WORKS													
88	13	13.17.1 12 mm:1:3(1 cement :3 coarse sand)	2	7.12		1.050	14.95								
89			1	3.16		1.050	3.32								
90							18.27	Sqm.	203.60	Rs. 3,719.77		0.49329	0.84956	1032.26	

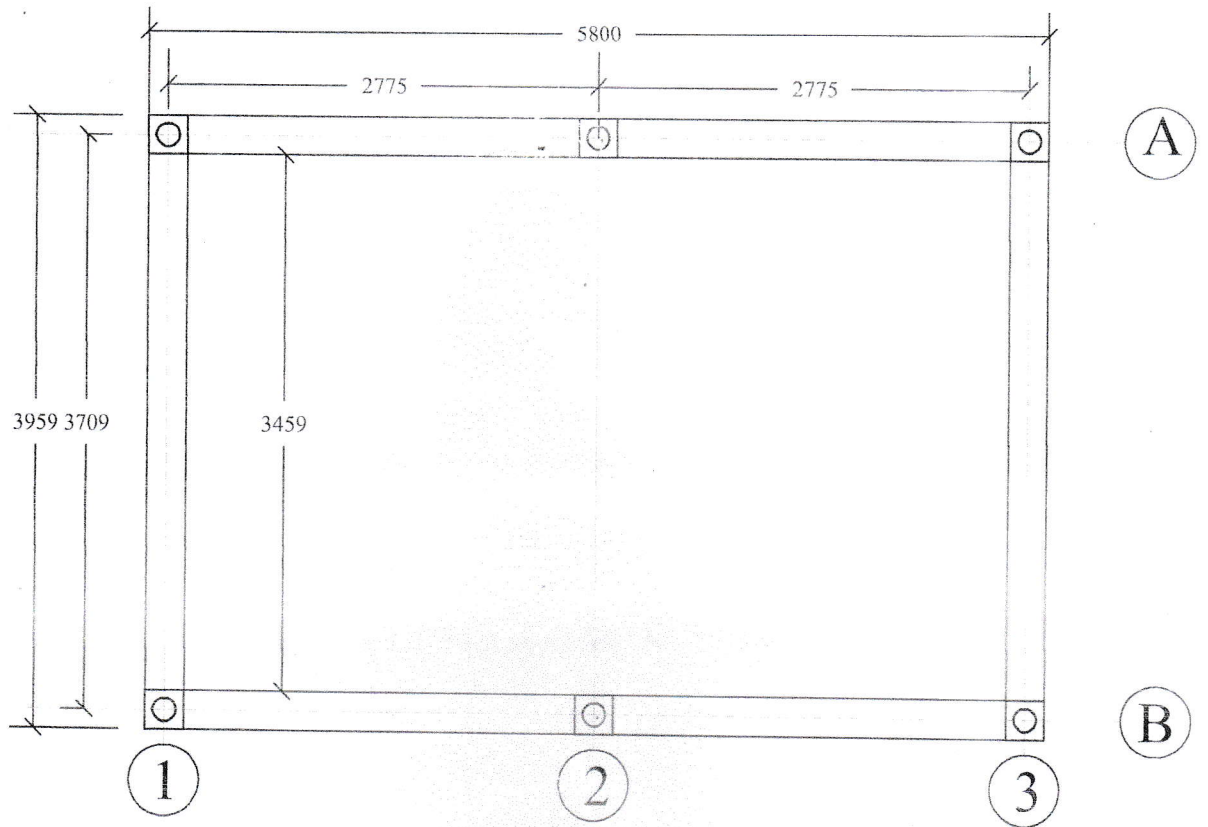
BILL OF QUANTITY

A	B	C	D	E	F	G	H	I	J	K	L	M	N	O	P
SL.	CODE	DESCRIPTION OF ITEM	NO.	LENGTH	WIDTH	DEPTH	QUANTITY	UNIT	RATE	AMOUNT	STONE	SAND	CEMENT	BRICKS	STEEL
91															
92	14	13.12.4 15 mm cement plaster on rough side of single or half brick wall of mix--- 1:6 (1 cement: 6 coarse sand)													
93			2	7.62			1.500	22.86							
94			1	3.16			0.450	1.42							
95			1	3.16			1.500	4.74							
96							29.02	Sqm.	162.80	Rs. 4,724.46	0.78354	1.34943	1639.63		
97	15	10.16.1 Steel work in built up tubular trusses including cutting, hoisting, fixing in position and applying a priming coat of approved steel primer, welded and bolted including special shaped washers etc. complete: Hot finished welded type tubes.													
98			18	0.25	0.25		1.13	94.50	106.79						
99			2	3.30			6.60	26.64	175.82						
100			2	3.15			6.30	26.64	167.83						
101			2	3.00			6.00	26.64	159.84						
102			6	3.96			23.76	9.08	215.74						
103			1	5.80			5.80	9.08	52.66						
104			5	0.30			1.50	9.08	13.62						
105			4	1.05			4.20	5.56	23.35						
106			5	5.80			29.00	5.56	161.24						
107			2	5.80			11.60	4.31	50.00						
108			1	3.66			3.66	4.31	15.77						
109								4.31	15.77						
110								4.31	15.77						
111	16	MR 20mm dia bolt 750MM LONG													
112	17	13.94 Painting with synthetic enamel paint of approved brand and manufacture of required colour to give an even shade:	4	6.00	0.75		18.00	Mtr.	198.00	Rs. 3,564.00					
113															
114			6	3.50	0.45		9.45								
115			6	3.66	0.26		5.71								
116			5	0.30	0.26		0.39								
117			5	0.20	0.26		0.26								
118			4	0.92	0.26		0.96								
119			5	0.20	7.92		7.92								
120							24.69	Sqrm.	116.50	Rs. 2,876.39					
															1.143

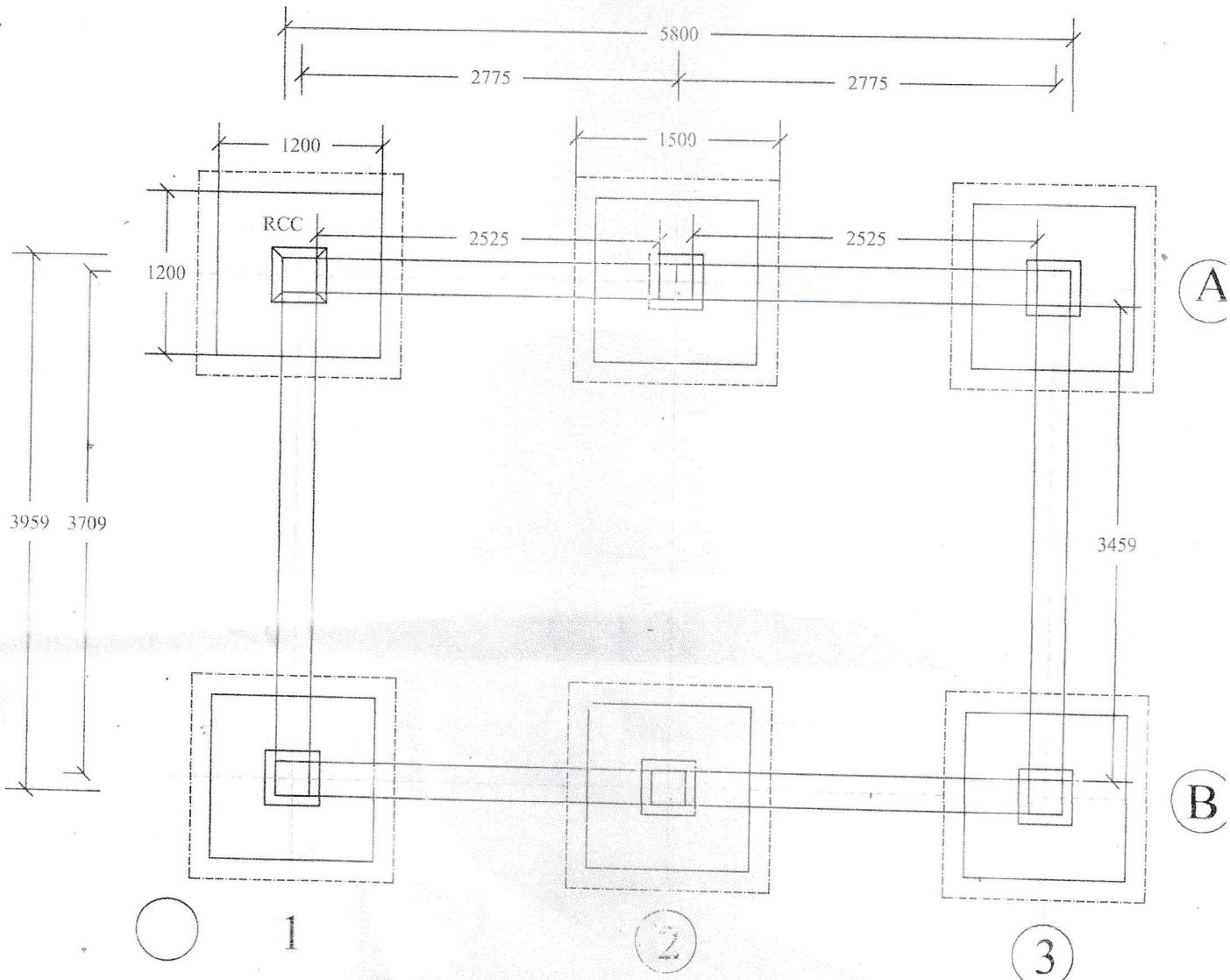
ESTIMATE / BILL OF QUANTITY

SL. CODE	DESCRIPTION OF ITEM/BRICKS STEEL	NO.	LENGTH	WIDTH	DEPTH	QUANTITY	UNIT	RATE	AMOUNT	STONE	SAND	CEMENT	BRICKS	STEEL
18	13.78.2 Distemper primer One or Two coats					47.29	Sqrm.	38.70	Rs. 1,830.12					Steel
19	13.96.1 Painting with acid roof paint of approved brand and manufacture of required color to give an even shade : Two or more coats on new work.													
12.50	Providing and fixing pre-coated galvanised iron profile sheets (size, shape and pitch of corrugation as approved by Engineer-in-charge) 0.50 mm (+ 0.05 %) total coated thickness with zinc coating 120 grams per sqm as per IS: 277, in 240 mpa steel grade, 5-7 microns epoxy primer on both side of the sheet and polyester top coat 15- 18 microns. Sheet should have protective guard film of 25 microns minimum to avoid scratches during transportation and should be supplied in single length upto 12 metre or as desired by Engineer-in-charge. The sheet shall be fixed using self drilling /self tapping screws of size (5.5x 55 mm) with EPDM seal, complete upto any pitch in horizontal/ vertical or curved surfaces, excluding the cost of purlins, rafters and trusses and including cutting to size and shape wherever required.					47.29	Sqrm.	88.50	Rs. 4,185.17					
	ROOF													
	wall shade	1	6.10	3.96		24.16								
	Sides	1	3.96	3.00		11.88								
	Front	2	5.95	3.75		44.63								
		1	3.66	1.20		4.36								
						85.06	Sqrm.	625.10	Rs. 53,171.01					
										6.31	5.68	7.98	4.011	1.676
										Cum. STONE	Cum. SAND	tonne CEMENT	nos BRICKS	Tonne STEEL

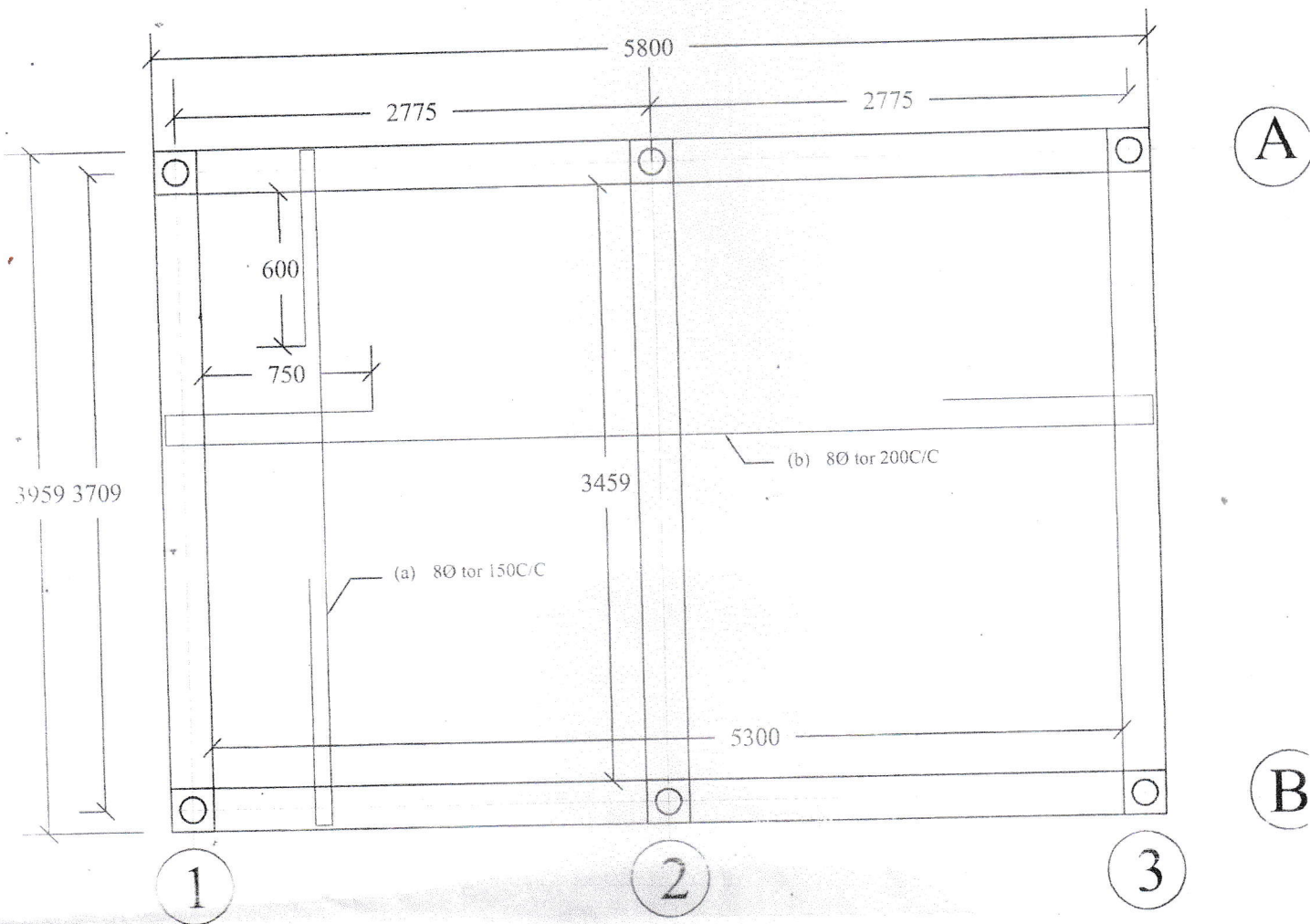
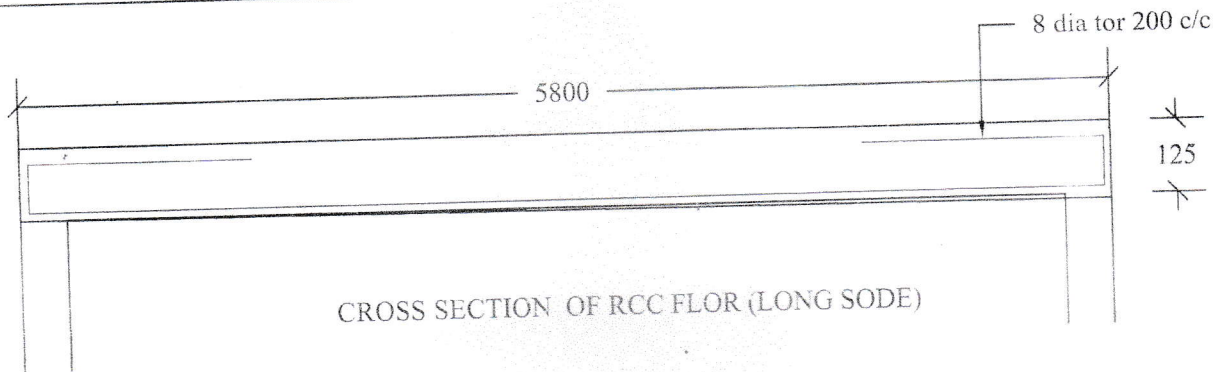
Sl.	CODE	DESCRIPTION OF ITEM/BRICKS STEEL	NO.	LENGTH	WIDTH	DEPTH	QUANTITY	UNIT	RATE	AMOUNT	STONE	SAND	CEMENT	Bricks	Steel
		CARRIAGE OF MATERIALS													
		STONE AGGREGATE[185]					6.31 Cum.		3333.57	Rs. 21,034.82					
		SONE SAND [45km.]					5.68 Cum.		1258.32	Rs. 7,147.26					
		LOCAL SAND[3km.]					12.35 Cum.		322.79	Rs. 3,986.46					
		CEMENT [3km.]					7.98 tonne		329.52	Rs. 2,629.57					
		STEEL[3km]					1.68 tonne		329.52	Rs. 553.59					
		BRICKS [8km.]					4.01 /00		1053.35	Rs. 4,224.98					
		DIFFERENCE OF MATERIAL COST													
		BRICKS													
		CEMENT					4.01 /00		290.57	Rs. 1,165.47					
		SUB TOTAL					7.98 tonne		166.51	Rs. 1,328.77					
		ADD GST as per Govt. of Bihar 5.36% as PWD Circular No. 5751 dated 18.07.2023								Rs. 4,05,353.23					
		TOTAL APPROXIMATE VALUE OF								Rs. 21,726.93					
		WORKS IN ROUND FIG.								Rs. 4,27,080.16					
										Rs. 4,27,080.00					
		I AM AGREE TO DO THIS WORKS:													
		1. ON THE BOQ RATE:					IN %			IN WORDS					
		2. BELOW THE GIVEN RATE (IN %)													
		3. ABOVE THE GIVEN RATE (IN %)													
		SIGNATURE OF CONTRACTOR								SIGNATURE OF I/C (Engg.)					



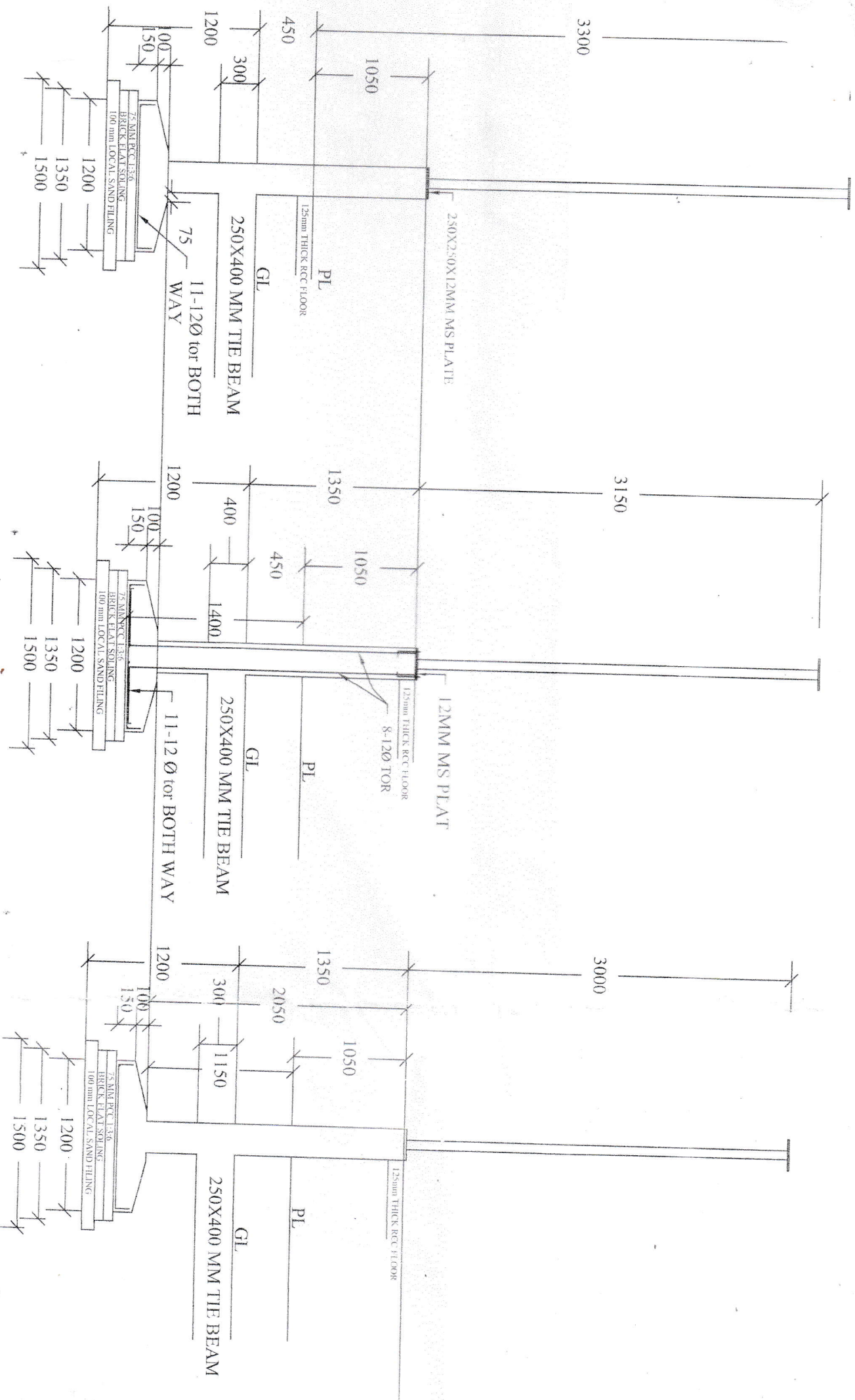
PLAN OF SALT PLATFORM



FOUNDATION LAYOUT OF PLAN OF SALT PLATFORM



125 MM THICK FLOOR RCC DETAIL



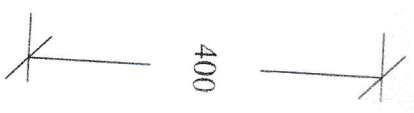
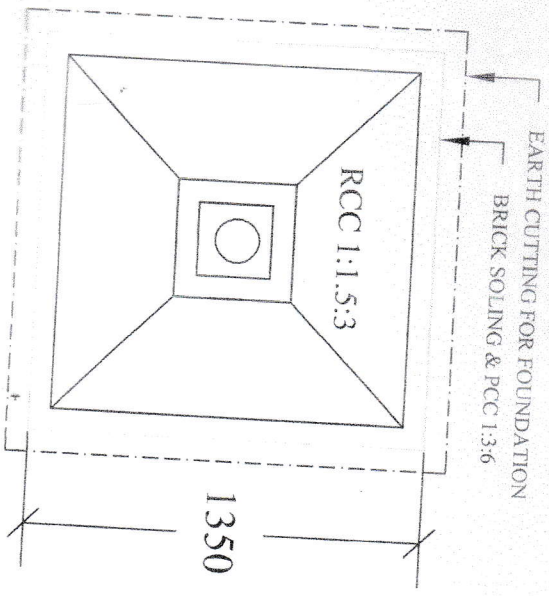
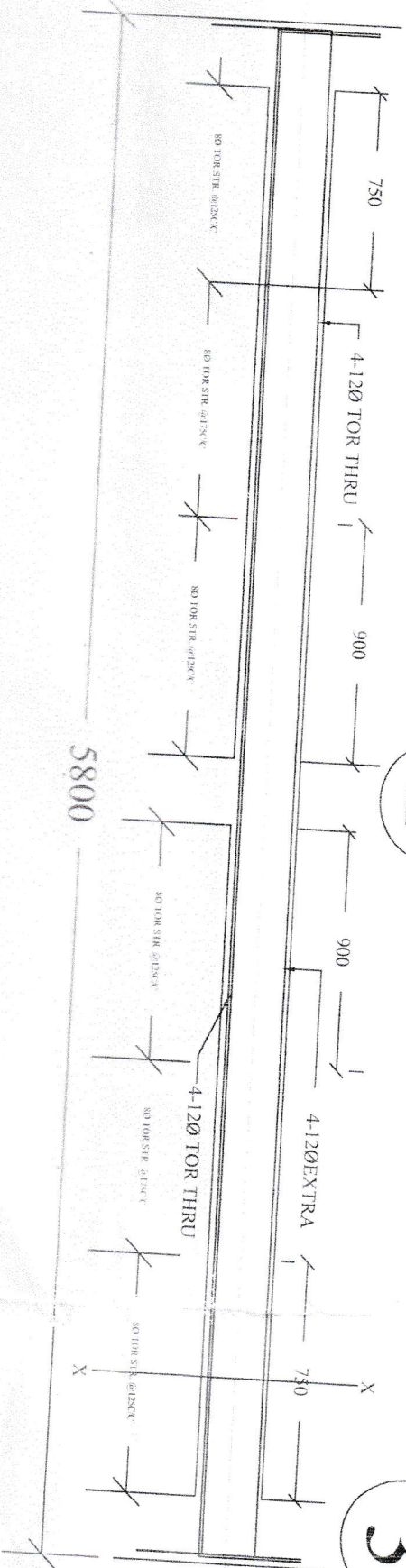
FOUNDATION & COLUMN DETAILS

1

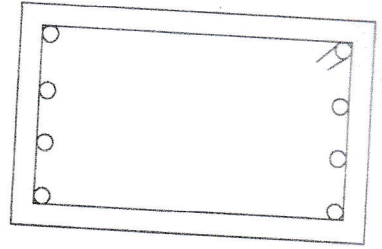
2

3

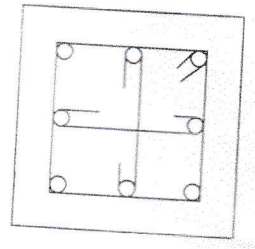
B



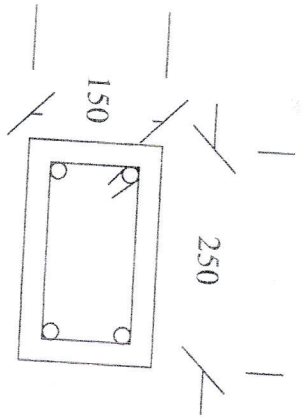
TIE BEAM
250 X 400
8-120 TOR



COLUMN
250 X 250
8-120 TOR



PLINTH BAND
250 X 150
4-100 TOR



TRUSS DETAIL

