

VAISHAL PATLIPUTRA DUGDH UTPADAK SAHKARI SANGH LTD

PATNA DAIRY PROJECT

Feeder Balancing Dairy Complex, Phulwarisharif, Patna – 801505

An ISO 22000:2005 Certified Organisation

Phone 0612-2252553,2252542, 2251622, Fax 2250325

E.mail:vpmu.pur@gmail.com

GST no. 10AAAAV8463B1ZV

Tender Notice

PDP:PUR:FBD: 7978

Dated: 15.03.2024

Sealed tenders are invited from civil contractors registered with Building Construction Works Department, Rural Works Department, Water Resource Department, Government of Bihar OR registered with COMFED in suitable class for the civil work as given below :-

Sl no.	Name of Work	Estimated Cost (In Rs.)	Amount of EMD (In Rs.)	Cost of BOQ (In Rs.)	Time of Completion
	Civil construction work Salt Platform with Truss Roof at Hajipur Dairy, Hajipur. The details scope of work as per BOQ and diagrams attached herewith	4,27,080.00	8550.00	850.00	45 days

- (1) Tender document can be obtained from the Cashier at office (Patna Dairy Project), VPDUSS Ltd during office hours OR it may be downloaded from website – www.patnadairy.org up to **04.04.2023 (Tuesday) at 3.00 pm**. Downloaded BOQ must be accompany with DD of BOQ Cost. DD of any nationalized bank shall be submitted in favour of “**Vaishal Patliputra Dugdh Utpadak Sahkari Sangh Ltd.**”, Payable at **Patna**
- (2) Contractors who down load the tender and those who purchase the **tender / BOQ** directly from office at Patna Dairy Project, both will send their completed tender in a sealed envelope **through registered post or through courier to Purchase section at Patna Dairy Project address.**
- (3) Last date of receipt of completed tender – **05.04.2023 (Wednesday) up to 3:00 pm. Tenders received after due date & time shall not to be considered.**
- (4) Date of **opening all received tenders-06.04.2023 (Thursday) at 3:00pm** in the presence of the tenders of their authorized agent in the office of Patna Dairy Project, VPMU.
- (5) Tenders received after due date & time shall not be considered.
Undersigned reserves the right to extend the dates OR cancel the tender.

Managing Director

BILL OF QUANTITY

**CIVIL CONSTRUCTION WORK OF SALT PLATFORM WITH TRUSS ROOF AT HAJIPUR DAIRY
PROJECT, HAJIPUR.**

SIZE: 5.80 X3.96X3.05

SL.	CODE	DESCRIPTION OF ITEM	NO.	LENGTH	WIDTH	DEPTH	QUANTITY	UNIT	RATE	AMOUNT	STONE	SAND	CEMENT	BRICKS	STEEL
1	2.8	Earth work in excavation in foundation trenches or drains(not exceeding 1.5 m in width or 10 sqm on plan) including dressing of sides and ramming of bottoms, lift upto 1.5 m . Including getting out the excavated soil and disposal of surplus excavated soil as directed, within a lead of 50 m													
5		COLUMN FOUNDATION	6	1.50	1.50	1.200	16.20								
6		TIE BEAM	2	5.05	0.40	0.300	1.21								
7			2	3.459	0.40	0.30	0.83								
8							18.24	Cum.	360.70	Rs. 6,579.17					
9															
2	2.28	Supplying and Filling in plinth with local sand and under floors including, watering, ramming consolidating and dressing complete.													
11		FOUNDATION BED	6	1.50	1.50	0.10	1.35								
12		UNDER FLOOR	2	5.30	3.46	0.30	11.00								
13							12.35	Cum.	287.30	Rs. 3,548.16					
14															
3	11.72	Providing designation 100 A one brick flat soling joints filled with local sand including cost of watering, taxes, royalty all complete as per building specification and direction of E/I,													
16		FOUNDATION BED	6	1.35	1.35		10.94								
17		The beam T1	2	5.05	0.25		2.53								
18		The beam T2	3	3.459	0.25		2.59								
19		UNDER FLOOR	1	5.30	3.460		18.34								
20							0.00								
21		TOTAL					34.40	Sqm.	283.30	Rs. 9,745.52		0.58		1109.00	
22															

BILL OF QUANTITY

A	B	C	D	E	F	G	H	I	J	K	L	M	N	O	P
SL.	CODE	DESCRIPTION OF ITEM	NO.	LENGTH	WIDTH	DEPTH	QUANTITY	UNIT	RATE	AMOUNT	STONE	SAND	CEMENT	BRICKS	STEEL
3	4	4.1	Providing and laying in position cement concrete of specified grade excluding the cost of centring and shuttering-all work upto plinth level.												
23	4.1.5	1:3:6 (1 Cement: 3 coarse sand : 6graded stone aggregate 20 mm nominal size)													
24		FOUNDATION	6	1.35	1.35	0.075	0.82								
25		UNDER FLOOR	1	5.30	3.460	0.10	1.83								
26		TOTAL					2.65	Cum.	3434.00	Rs. 9,100.10	2.49	1.25	0.85		
27															
28															
5	5.1	Providing and laying in position specified grade of reinforced cement concrete excluding the cost of centring, shuttering,finishing and reinforcement- All work upto plinth level													
29															
30	5.1.2	1:1.5:3 (1 cement:1.5 coarse sand:3 graded stone aggregate 20mm nominal size)													
31		RCC IN FOUNDATION	6	1.20	1.20	0.15	1.30								
32		$H/3(a^2+b^2)+(\sqrt{a^2+b^2})$	0.2	1.44	0.16	0.48	0.02								
33		Tie beam T1	2	5.05	0.25	0.40	1.01								
34		Tie beam T2	2	3.460	0.25	0.40	0.69								
35		column	6	0.25	0.25	2.20	0.83								
36		band-B1 4-12Ø	2	5.05	0.25	0.15	0.38								
37		band-b2 4-12Ø	2	3.46	0.25	0.15	0.26								
38		TOTAL					4.49	Cum.	4688.30	Rs. 21,050.47	3.82	1.91	2.74		
39															
6	5.22	Reinforcement for R.C.C. work including straightening, cutting, bending, placing in position and binding all complete.													
40															
41		FOUNDATION FOOTING													
42	5.22.7C	11-12Ø BOTHWAY DOUBLE LAYER	6	22	1.25	165.00	0.888			146.52					
43		TIE BEAM-T1 6-12Ø	2	6	5.20	62.40	0.888			55.41					
44		extra at top	2	4	2.05	16.40	0.888			14.56					
45		both end	2	4	1.50	12.00	0.888			10.66					
46		TIE BEAM-T2 6-12Ø	2	6	4.36	52.32	0.888			46.46					
47			2	4	1.50	12.00	0.888			10.66					
48		Column	6	8	2.80	134.40	0.888			119.35					
49							1.2Ø			403.62	90.80	Rs. 36,648.70			0.404

BILL OF QUANTITY

A	B	C	D	E	F	G	H	I	J	K	L	M	N	O	P
SL.	CODE	DESCRIPTION OF ITEM	NO.	LENGTH	WIDTH	DEPTH	QUANTITY	UNIT	RATE	AMOUNT	STONE	SAND	CEMENT	BRICKS	STEEL
3															
50															
51	5.22.7B	10DIA TOR 4-NO IN PLINTH BAND													
52		band-B1 4-10Ø	2	4	5.95	47.60	0.617	29.37							
53		band-b2 4-10Ø	2	4	4.11	32.88	0.617	20.29							
54							10Ø	49.66	92.60	Rs. 4,598.52					
55															
56	5.22.7A	8Ø RINGS 150C/C													
57		Tie Beam T1 250 X 300	2	39	1.15	89.70	0.395	35.43							
58		Tie Beam T2 250 X 300	2	21	1.15	48.30	0.395	19.08							
59		Columns	6	13	0.75	58.50	0.395	23.11							
60			6	26	0.35	53.82	0.395	21.26							
61		band-B1 4-12Ø	2	21	0.75	31.50	0.395	12.44							
62		band-b2 4-12Ø	2	23	0.96	44.16	0.395	17.44							
63															
64							8Ø	128.76	94.50	Rs. 12,167.82					0.129
65		CENTERING SHUTTERING													
66	5.9.1	Foundations, footings, bases of columns etc. for mass concrete.													
67		PCC 1:3:6 PERIMETER	6	1.35	1.35	0.10	3.24	Sqm.							
68		RCC 1:1.5:3 bed	6	1.20	1.20	0.15	4.32	Sqm.							
69							7.56	Sqm.	211.60	Rs. 1,599.70					
70															
71	5.9.6	Columns, Pillars, Piers, Abutments, Posts and Struts													
72		PEDESTAL / COLUMN	6	0.25	0.25	2.200	13.20	Sqm.	494.40	Rs. 6,526.08					
73							13.20	Sqm.							
74	5.9.5	Lintels, beams, plinth bams, girders, brassumers and cantilevers.													
75		T1 [SIDE 0.40*2]	2	5.30		0.300	3.18								
76		T2 [SIDE 0.40*2]	2	3.960		0.300	2.38								
77		band B1	2	5.30		0.150	1.59								
78			2	3.960		0.150	1.19								
79							8.34	Sqm.	404.70	Rs. 3,375.20					
80	6.1.14A	Brick works up to plinth	2	5.30	0.25	0.450	1.19								
81			2	3.96	0.25	0.450	0.89	Cum.	4819.90	Rs. 10,025.39		0.5616	2.0175	1027.52	
82															
83															
84	6.1.14A + 6.4A	Brick works ABOVE plinth	2	5.30	0.25	1.050	2.78								
85			1	3.96	0.25	1.050	1.04	Sqm.	5662.10	Rs. 21,629.22		0.10314	0.17763	215.83	
86							3.82	Sqm.							
87		FINISHING WORKS													
88	13.17.1	12 mm:1:3(1 cement :3 coarse sand)	2	7.12		1.050	14.95								
89			1	3.16		1.050	3.32								
90							18.27	Sqm.	203.60	Rs. 3,719.77		0.49329	0.84956	1032.26	

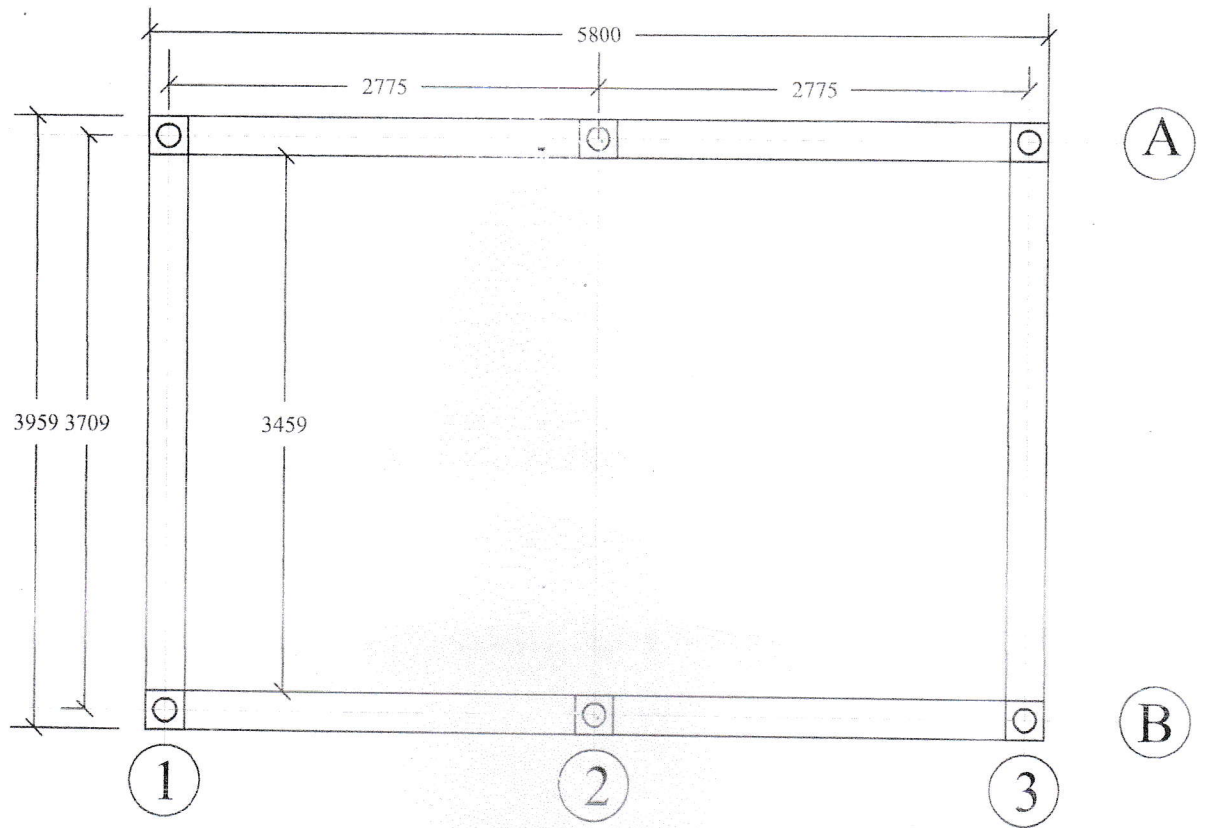
BILL OF QUANTITY

A	B	C	D	E	F	G	H	I	J	K	L	M	N	O	P
SL. NO.	CODE	DESCRIPTION OF ITEM	NO.	LENGTH	WIDTH	DEPTH	QUANTITY	UNIT	RATE	AMOUNT	STONE	SAND	CEMENT	BRICKS	STEEL
91															
92	14	13.12.4 15 mm cement plaster on rough side of single or half brick wall of mix:-: 1:6 (1 cement: 6 coarse sand)													
93			2	7.62			1.500		22.86						
94			1	3.16			0.450		1.42						
95			1	3.16			1.500		4.74						
96							29.02	Sqm.	162.80	Rs. 4,724.46		0.78354	1.34943	1639.63	
97	15	10.16.1 Steel work in built up tubular trusses including cutting, hoisting, fixing in position and applying a priming coat of approved steel primer, welded and bolted including special shaped washers etc. complete: Hot finished welded type tubes.													
98			18	0.25	0.25		1.13	94.50	106.79						
99		12MM THICK MS PLATE 250X250 MS SQUARE HOLLOW SECTION 150X150X6 (VERTICAL POST)	2	3.30			6.60	26.64	175.82						
100			2	3.15			6.30	26.64	167.83						
101			2	3.00			6.00	26.64	159.84						
102		MS SQUARE HOLLOW SECTION 65X65X5	6	3.96			23.76	9.08	215.74						
103			1	5.80			5.80	9.08	52.66						
104		VERTICAL	5	0.30			1.50	9.08	13.62						
105		INCLINED MEMBER 50X50X4	4	1.05			4.20	5.56	23.35						
106		PURLIN 50X50X4MM	5	5.80			29.00	5.56	161.24						
107		HORIZONTAL SUPPORT 50X50X3MM	2	5.80			11.60	4.31	50.00						
108			1	3.66			3.66	4.31	15.77						
109		TOTAL					1142.66		123.90	Rs. 1,41,575.57					1.143
110															
111	16	M/R 20mm dia bolt 750MM LONG	4	6.00	0.75		18.00	Mtr.	198.00	Rs. 3,564.00					
112	17	13.94 Painting with synthetic enamel paint of approved brand and manufacture of required colour to give an even shade:													
113		13.94.1 Two or more coats on new work over an under coat of suitable shade with ordinary paint+ of approved brand and	6	3.50	0.45		9.45								
114		POST	6	3.66	0.26		5.71								
115			5	0.30	0.26		0.39								
116			5	0.20	0.26		0.26								
117			4	0.92	0.26		0.96								
118			5	0.20	7.92		7.92								
119							24.69	Sum.	116.50	Rs. 2,876.39					
120															

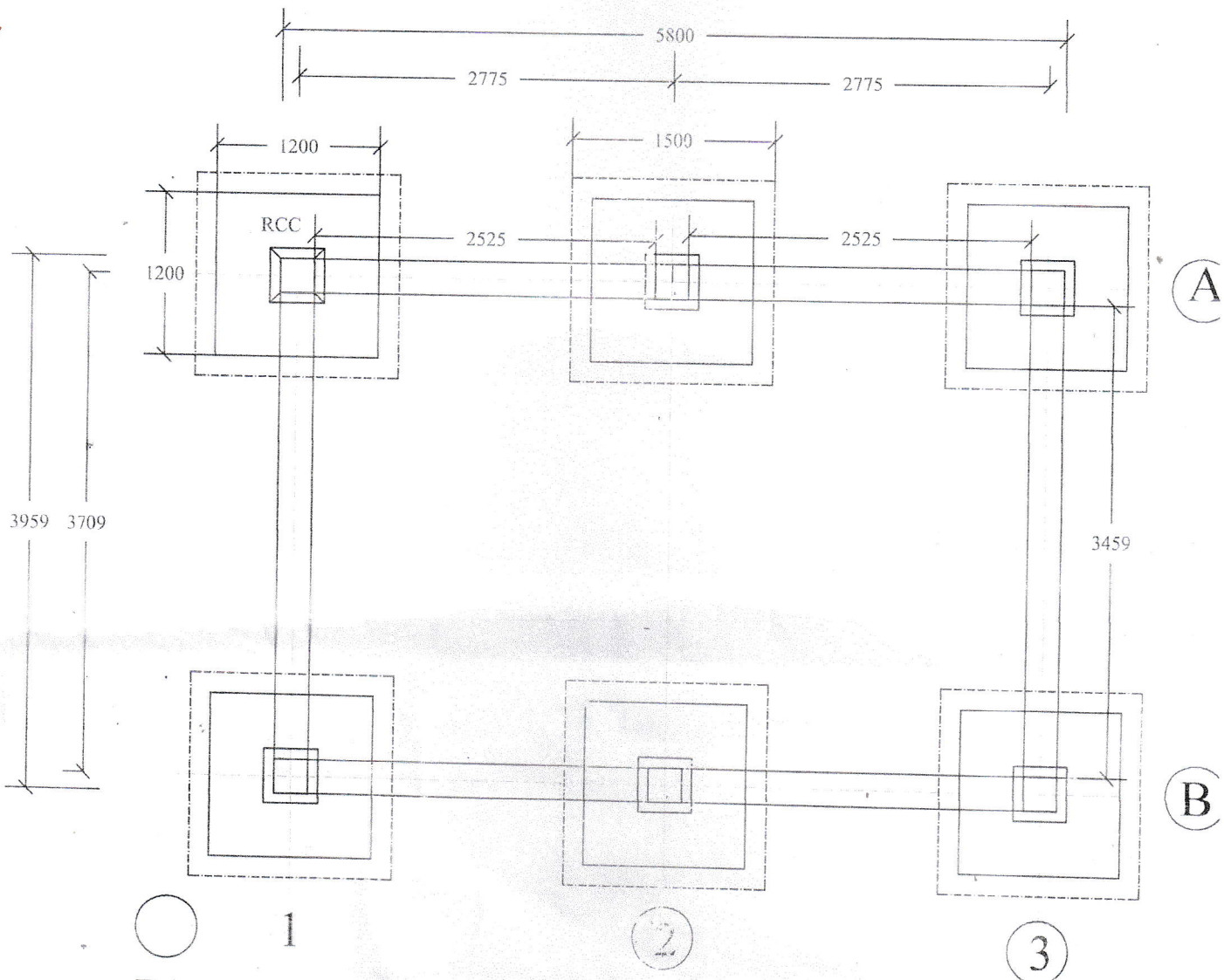
ESTIMATE / BILL OF QUANTITY

SL. NO.	CODE	DESCRIPTION OF ITEM/BRICKS STEEL	NO.	LENGTH	WIDTH	DEPTH	QUANTITY	UNIT	RATE	AMOUNT	STONE	SAND	CEMENT	Bricks	Steel
18	13.78.2	Distemper primer One or Two coats					47.29	Sqm.	38.70	Rs. 1,830.12					Steel
19	13.96.1	Painting with acid roof paint of approved brand and manufacture of required color to give an even shade : Two or more coats on new work.													
	12.50	Providing and fixing pre-coated galvanised iron profile sheets (size, shape and pitch of corrugation as approved by Engineer-in-charge) 0.50 mm (+ 0.05 %) total coated thickness with zinc coating 120 grams per sqm as per IS: 277, in 240 mpa steel grade, 5-7 microns epoxy primer on both side of the sheet and polyester top coat 15- 18 microns. Sheet should have protective guard film of 25 microns minimum to avoid scratches during transportation and should be supplied in single length upto 12 metre or as desired by Engineer-in-charge. The sheet shall be fixed using self drilling /self tapping screws of size (5.5x 55 mm) with EPDM seal, complete upto any pitch in horizontal/ vertical or curved surfaces, excluding the cost of purlins, rafters and trusses and including cutting to size and shape wherever required.					47.29	Sqm.	88.50	Rs. 4,185.17					
		ROOF	1	6.10	3.96		24.16								
		wall shade	1	3.96	3.00		11.88								
		Sides	2	5.95	3.75		44.63								
		Front	1	3.66	1.20		4.36								
							85.06	Sqm.	625.10	Rs. 53,171.01	6.31	5.68	7.98	4.011	1.676
											Cum. STONE	Cum. SAND	tonne CEMENT	nos BRICKS	Tonne STEEL

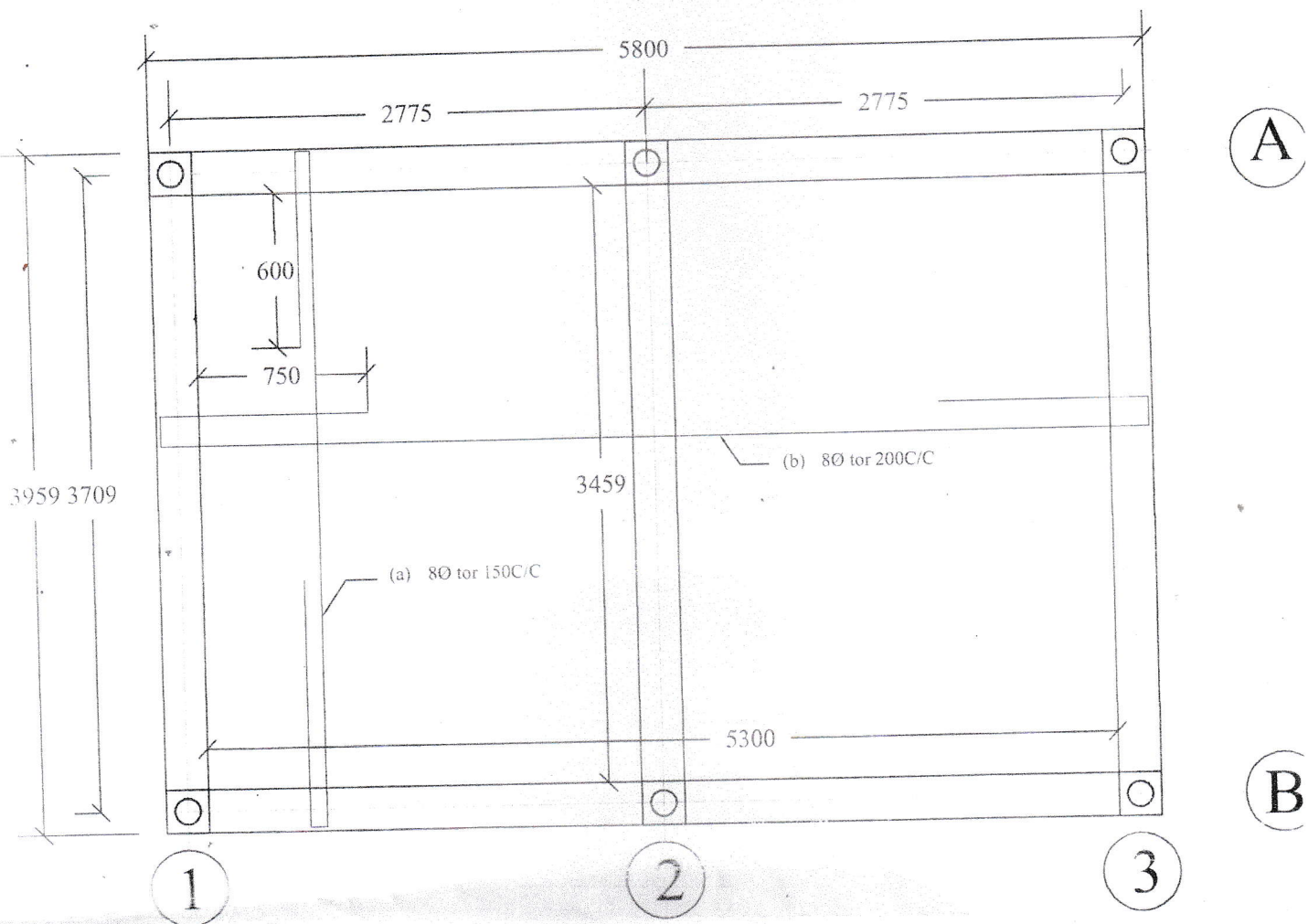
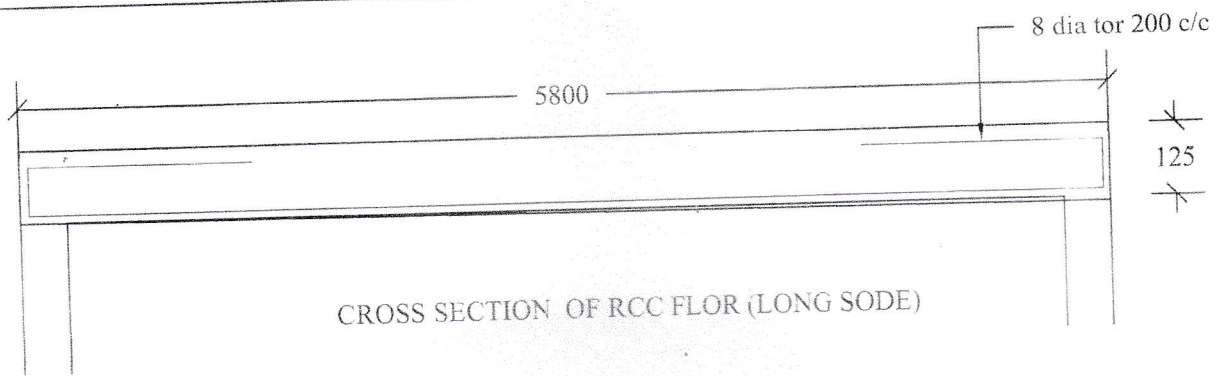
SL. NO.	CODE	DESCRIPTION OF ITEM	BRICKS	STEEL	NO.	LENGTH	WIDTH	DEPTH	QUANTITY	UNIT	RATE	AMOUNT	STONE	SAND	CEMENT	Bricks	Steel	
		CARRIAGE OF MATERIALS																
		STONE AGGREGATE [185]							6.31	Cum.	3333.57	Rs. 21,034.82						
		STONE SAND [45km.]							5.68	Cum.	1258.32	Rs. 7,147.26						
		LOCAL SAND [3km.]							12.35	Cum.	322.79	Rs. 3,986.46						
		CEMENT [3km.]							7.98	tonne	329.52	Rs. 2,629.57						
		STEEL [3km.]							1.68	tonne	329.52	Rs. 563.59						
		BRICKS [8km.]							4.01	100	1053.35	Rs. 4,224.98						
		DIFFERENCE OF MATERIAL COST																
		BRICKS																
		CEMENT							4.01	100	290.57	Rs. 1,165.47						
		SUB TOTAL							7.98	tonne	166.51	Rs. 1,328.77						
		ADD GST as per Govt. of Bihar 5.36% as PWD Circular No. 5751 dated 18.07.2023										Rs. 4,05,353.23						
		TOTAL APPROXIMATE VALUE OF WORKS IN ROUND FIG.										Rs. 21,726.93						
												Rs. 4,27,080.16						
												Rs. 4,27,080.00						
		I AM AGREE TO DO THIS WORKS:																
		1. ON THE BOQ RATE: IN %																
		2. BELOW THE GIVEN RATE (IN %)																
		3. ABOVE THE GIVEN RATE (IN %)																
		SIGNATURE OF CONTRACTOR																
		SIGNATURE OF I/C (Engg.)																



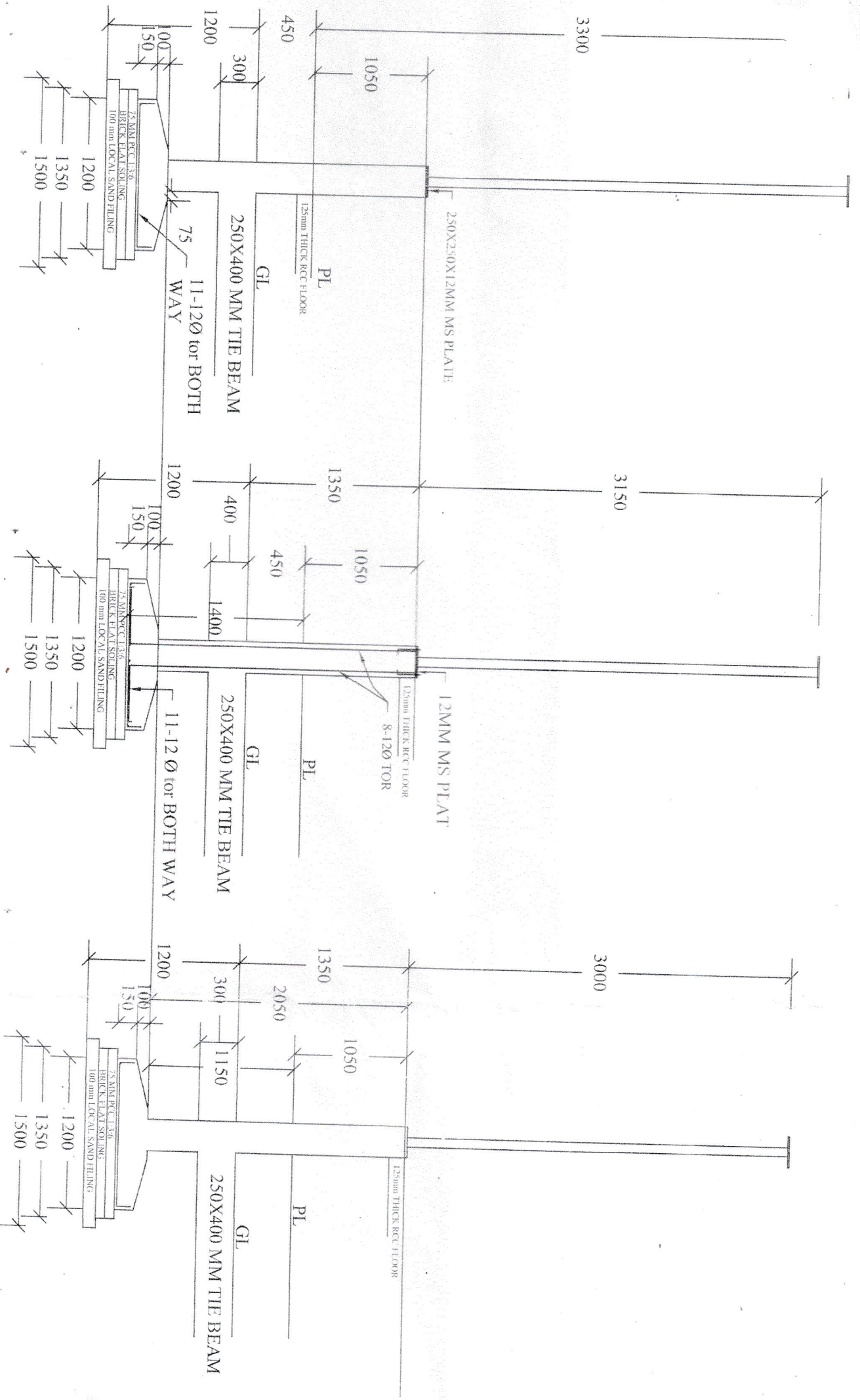
PLAN OF SALT PLATFORM



FOUNDATION LAYOUT OF PLAN OF SALT PLATFORM



125 MM THICK FLOOR RCC DETAIL



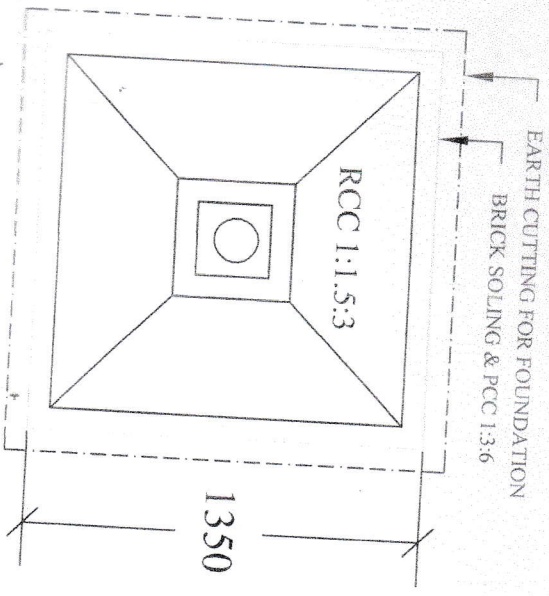
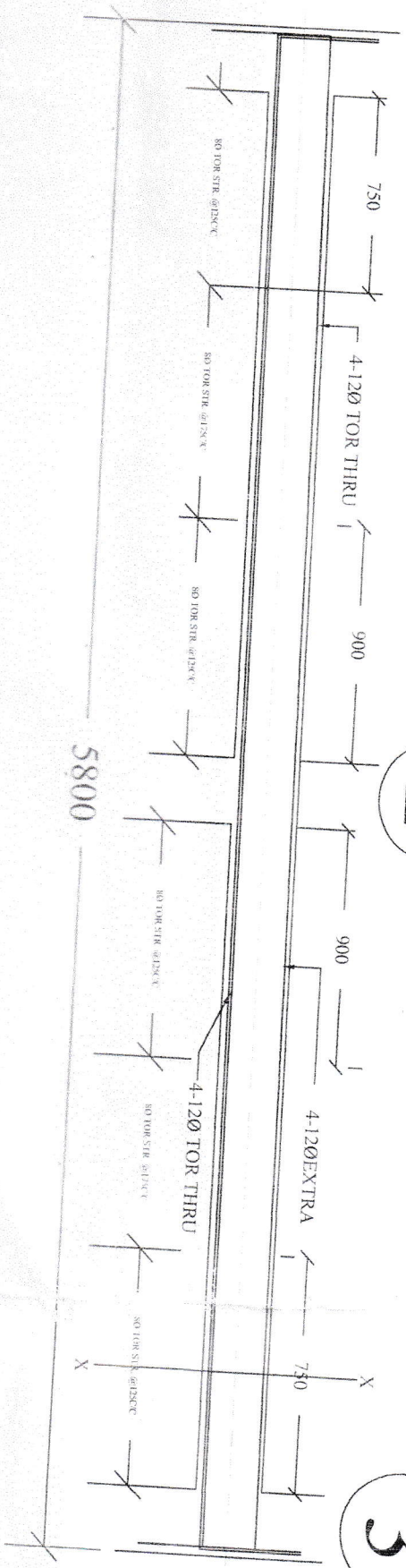
FOUNDATION & COLUMN DETAILS

1

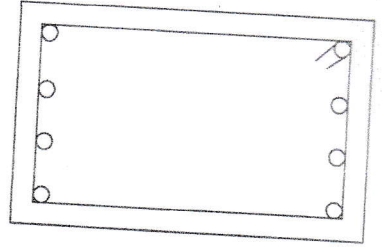
2

3

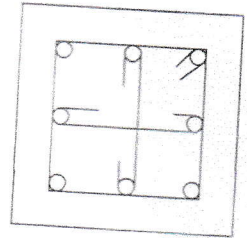
B



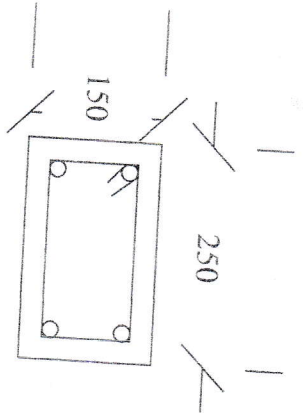
TIE BEAM
250 X 400
8-120 TOR



COLUMN
250 X 250
8-120 TOR



PLINTH BAND
250 X 150
4-100 TOR



TRUSS DETAIL

