

VAISHAL PATLIPUTRA DUGDH UTPADAK SAHKARI SANGH LTD

PATNA DAIRY PROJECT

Feeder Balancing Dairy Complex, Phulwarisharif, Patna – 801505

An ISO 22000:2005 Certified Organisation

Phone 0612-2252553,2252542, 2251622, Fax 2250325

E.mail:vpmu.pur@gmail.com

GST no. 10AAAV8463B1ZV

Short Tender Notice

PDP:PUR:FBD: 4138

Dated: 06.09.2024

Sealed tenders are invited from civil contractors registered with Building Construction works Department, Rural Works Department, Water Resource Department, Government of Bihar OR registered with COMFED in suitable class for the civil work as given below :-

Sl no.	Name of Work	Estimated Cost (In Rs.)	Amount of EMD (In Rs.)	Cost of BOQ (In Rs.)	Time of Completion
	Civil construction work Renovation of Conference Room & Toilet Room in the old Boiler Room at Ground Floor in Hajipur Dairy, Hajipur The details scope of work as per BOQ and diagrams attached herewith	9.71,434.00	19429.00	1200.00	45 days

- (1) Tender document can be obtained from the Cashier at office (Patna Dairy Project), VPDUSS Ltd during office hours OR it may be downloaded from website – www.patnadairy.org up to **27.09.2024 at 3.00 pm**. Downloaded BOQ must be accompany with DD of BOQ Cost. DD of any nationalized bank shall be submitted in favour of “**Vaishal Patliputra Dugdh Utpadak Sahkari Sangh Ltd.**”, Payable at **Patna**
 - (2) Contractors who down load the tender and those who purchase the **tender / BOQ** directly from office at Patna Dairy Project, both will send their completed tender in a sealed envelope **through registered post or through courier to Purchase section at Patna Dairy Project address.**
 - (3) Last date of receipt of completed tender – **28.09.2024 up to 3:00 pm. Tenders received after due date & time shall not to be considered.**
 - (4) Date of **opening all received tenders-30.09.2024 at 3:00pm** in the presence of the tenders of their authorized agent in the office of Patna Dairy Project, VPMU.
 - (5) Tenders received after due date & time shall not be considered.
- Undersigned reserves the right to extend the dates OR cancel the tender.

Managing Director

BOQ						
CLIENT: VAISHALI PATLIPUTRA DUGDH UTPADAK SAHKARI SANGH LIMITED, PATNA DAIRY PROJECT , PATNA						
Name of Work: CIVIL CONSTRUCTION WORK OF RENOVATION OF CONFERENCE ROOM & TOILET ROOM IN THE OLD BOILER ROOM AT GROUND FLOOR IN HAJIPUR DAIRY, HAJIPUR						
Work Order						PAGE 1
SR. No.	BSOR 2022	DESCRIPTION OF WORK (CIVIL WORK)	UNIT	RATE	QTY	Amount
1	6.1A	Brick Work with bricks of class designation 100A in foundation and plinth in				
	6.1.14A	Cement mortar 1:6 (1cement: 6 coarse sand)	CUM	4819.90		
2	6.3A	Brick work in superstructure above plinth level upto floor V	CUM	638.20		
				5,458.10	9.60	52397.76
3	13.12	15 mm cement plaster on rough side of single or half brick wall of mix.				
	13.12.2	1:4 (1 cement: 4 course sand)	SQM	176.40	86.52	15262.13
4	8.2	Providing and fixing 18 mm thick gang saw cut, mirror polished, premoulded and prepolished, machine cut for kitchen platforms, vanity counters, window seals, facias and similar location, of required size, approved shade, colour and texture laid over 20 mm thick base cement mortar 1:4 (1 cement: 4 coarse sand), joints treated with white cement, mixed with matching pigment, epoxy touch ups, including rubbing, curing, moulding and polishing to edges to give high gloss finish etc.				
	8.2.2.1	Granite of any colour and shades area of slab over 0.50 sqm	SQM	4242.90	3.71	15741.16
5	8.3	Providing edge moulding to 18 mm thick marble stone counters, vanities etc., including machine polishing to edge to give high gloss finish etc. complete as per design approved by engineer-in-charge				
	8.3.2	Granite Work	M	260.10	4.95	1287.50
6	8.4	Extra for fixing marble/granite stone over and above corresponding basic item in facia and drops of width upto 150mm with epoxy resin based (araldite) or equivalent adhesive including cleaning etc.	M	279.40	4.95	1383.03
7	13.40	Providing and applying plaster of paris putty of 2mm thickness over plastered surface to prepare the surface even and smooth complete.	SQM	127.90	186.27	23823.93
8	13.46	Finishing walls with acrylic smooth exterior paint of required shade:				
	13.46.1	New work (two or more coat applied @ 1.67 ltr/10 sqm over and including priming coat of exterior primer applied @2.20 kg/ 10 sqm	SQM	137.00	186.27	25518.99
9	11.41	Providing and laying vitrified floor tiles in different sizes (thickness to be specified by the manufacturer) with water absorption less than 0.08 % and confirming to IS: 15622 of approved make in all colours and shades, laid on 20mm thick cement mortar 1:4 (1 cement: 4 coarse sand) including grouting the joint with white cement and matching pigments etc., complete				
	11.41.2	Size of tiles 60x60 cm	SQM	1,638.80	77.80	127498.64
10	11.46	Providing and laying vitrified tiles in different sizes (thickness to be specified by manufacturer), with water absorption less than 0.08% and confirming to IS: 15622, of approved make, in all colours and shade, in skirting, riser of steps, over 12 mm thick bed of cement mortar 1:3 (1 cement: 3 coarse sand), including grouting the joint with white cement & matching pigments etc. complete.				
	11.46.2	Size of tiles 600x600 mm	SQM	1,191.80	7.65	9117.27
11	11.36	Providing and fixing 1st quality ceramic glazed wall tiles conforming to IS: 15622 (thickness to be specified by the manufacturer) of approved make in all colours, shades except Burgundy, bottle green, black of any size as approved by Engineer-in-charge in skirting, risers of steps and dados over 12 mm thick bed of cement mortar 1:3 (1cement: 3 coarse sand) and jointing with grey cement slurry @ 3.3kg per sqm including pointing in white cement mixed with pigment of matching shade complete.	SQM	795.00	34.24	27220.80

12	5.3	Reinforced cement concrete work in beams, suspended floors, roofs having slope upto q5, landings, balconies, shelves, chajjas, lintels, bands, plain window seals, staircases and spiral stair case upto floor five level excluding the cost of centring, shuttering, finishing and reinforcement with 1:2:4(1cement: 2 coarse sand: 4 graded stone aggregate 20 mm nominal size).	CUM	5,335.90	1.58	8430.72
13	5.22	Reinforcement for R.C.C. work including straightening, cutting, bending, placing in position and binding all complete				
	5.22.7C	Thermo-Mechanically Treated bars TMTC-500-12mm dia.	Kg.	90.80	7.90	717.32
	5.22.7B	Thermo-Mechanically Treated bars TMTC-500-10mm dia.	Kg.	92.60	14.22	1316.77
	5.22.1	Mild steel 6.00 mm dia	Kg.	96.70	10.67	1031.79
14	11.72	Providing designation 100 A one brick flat soaling joints filled with local sand including cost of watering, taxes, royalty and complete as per building specification and direction of E/I.	SQM	283.30	12.00	3399.60
15	15.3	Demolishing R.C.C. work including stacking of steel bars and disposal of unserviceable material within 50 meters lead:	CUM	1,411.20	2.31	3259.87
16	15.7.4	Demolishing brick work including stacking of serviceable material and disposal of unserviceable material within 50 meters lead:	CUM	823.70	2.24	1845.09
17	15.8.3	Removing mortar from bricks and cleaning bricks including stacking within a lead of 50m (stacks of cleaned bricks shall be measured):		2,706.20	2.24	6061.89
18	15.12.2	Dismantling doors, windows and clerestory windows (steel & wood) shutters including chowkhats, architrave, holdfasts etc. complete and stacking within 50 metres lead: of area beyond 3 sqm	each	208.80	5.00	1044.00
19	15.23	Dismantling tiles work in floors, dado, skirtings and roofs laid in cement mortar including stacking material within 50 meters lead				
	15.23.1	For thickness of wall tiles 10mm to 25mm floor tiles	SQM	30.70	39.54	1213.88
	15.23.2	For thickness of tiles above 25mm and upto 40 mm floor	SQM	47.50	11.00	522.50
20	15.52	Dismantling of flushing cistern, WC, urinal & wash basin etc of any size including stacking of useful materials near the site and disposal of unserviceable materials within 50 meters lead	EACH	396.10	4.00	1584.40
21	13.8	Removing dry or oil bound distemper, water proofing cement paint and the like by scrapping, sand papering and preparing the surface smooth including necessary repairs to scratch etc. complete.	SQM	9.70	186.27	1806.82
22	17.78	Providing and fixing white vitrious china extended wall mounting water closet of size 780x370x690 mm of approved shape including privoding and fixing white vitrious china cystem with dual flush fitting of flushing capacity 3/6 liter (adjustable) in 4/8 liter including seat cover and cystem fitting, nut bolt and gasket etc. complete	Each	15,599.60	2.00	31199.20
23	17.10.2	Kitchen Sink without drain board				
	17.10.2.2	610x460 mm bowl depth 200 mm	Each	2,812.90	1.00	2812.90
24	17.7	Providing and fixing wash basin with bracket, 15 mm CP Brass pillar tap, 32mm CP Brass waste of standard pattern including painting of fittings and brackets. Cutting and making good the walls wherever required				
	17.7A	Providing and fixing wash basin with C.I. bracket, 15 mm dia CP Brass single hole basin mixture of approved quality and make including painting of fittings and bracket. Cutting and making good the wall wherever required A. white vitrious china washbasin size 550x400 mm with a 15mm CP brass single hole basin mixture.	Each	3,932.10	2.00	7864.20
25	17.8	Providing and fixing white vitruios china pedastal for washbasin complete resseded at the back for the reception of pipes and fittings	Each	1,500.00	2.00	3000.00

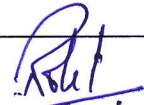
26	17.5	Providing and fixing white vitrious china flat back half stall urinal of size 580x380x350 mm with white PVC automatic flushing system with fittings standard size CP brass flush pipe spreader with unions and clamps (all in CP Brass) with waste fittings per IS: 2556, C.I. Trap with outlet grating and other coupling in C.P. brass including painting of fittings and cutting and making good the walls and floors wherever required				
	17.5.4	Range of 4 half stall urinals with 10 liter PVC automatic flushing systems	Each	14,562.40	1.00	14562.40
27	17.22	Providing and fixing G.I. inlet connection for flush pipe connecting with WC pan	Each	131.60	9.00	1184.40
	17.22A	Providing and fixing CP brass 32 mm dia bottle trap of approved quality and make as per the direction of Engineer-in-Charge	Each	886.20	3.00	2658.60
28	17.28	Providing and fixing PVC waste pipe for sink or wash basin including PVC waste fittings complete				
	17.28.2	Flexible pipe				0.00
	17.28.2.2	40 mm dia	Each	104.40	1.00	104.40
29	17.31	Providing and fixing 600x450 mm bavelled edge mirror of superior glass of approved quality complete with 6mm thick hardboard ground fixed to wooden cleats with CP brass screw and washer complete	Each	1,068.50	2.00	2137.00
	M.R -1	Providing & fixing with all necessary material Health Faucet of renould compny approved by Engineer Incharge.	Each	2,338.58	2.00	4677.16
	M.R -2	Providing & fixing with all necessary material forl Basin mixture of approved quality confirming to IS :8931.	Each	3,442.91	2.00	6885.82
		Providing & fixing with all necessary material for RO water purifier aqua bliss Karona make	Each	23,171.58	1.00	23171.58
30	17.71	Providing and fixing PTMT liquid soap container 109 mm wide, 125 mm high and 112 mm distance from wall of standard shape with bracket of the same materials with snap fittings of approved quality and colour. Weighing not less than 105 gms.	Each	146.30	2.00	292.60
31	17.72	Providing and fixing PTMT towel ring trapezoidal shape 215 mm long, 200 mm wide with minimum distance 37 mm from wall face with concealed fittings arrangement of approved quality and colour, wighing not less than 88 gms.	Each	204.70	2.00	409.40
32	17.75	Providing and fixing PTMT 15 mm urinal spreader size 95x69x100 mm with 1/2" BSP thread and shapes, weighing not less than 60 gms	Each	92.80	2.00	185.60
33	18.8	Providing and fixing chlorinated polyvinyl chloride (CPVC) pipes, having thermal stability for hot & cold water supply, including all CPVC plain 7 brass threaded fittings, including fixing the pipe with clamps at 1.00 m spacing,. This includes jointing of pipes & fittings with one step CPVC solvent cement and testing of joints complete as per direction of engineer-in-charge				
	18.8.1	15mm nominal outer dia pipes	Meter	278.20	45.00	12519.00
	18.8.3	25mm nominal outer dia pipes	Meter	463.10	15.00	6946.50
34	18.49	Providing and fixing CP brass bib cock of approved quality:	Each	434.20	3.00	1302.60
35	18.52	Providing and fixing CP brass stop cock concealed of standard design and approved make confirming to IS: 8931	Each	594.80	1.00	594.80
36	18.53	Providing and fixing CP brass angle valve for basin mixture and geyser points of approved quality confirming to IS: 8931	Each	500.40	8.00	4003.20
	18.53A	Providing and fixing CP brass extension nipple size (15mm x 50 mm) of approved make and quality as per direction of engineer-in-charge	Each	61.70	20.00	1234.00
38	18.58	Providing and fixing PTMT grating of approved quality and colour				
7	18.58.1.2	125 mm niminal dia with 25 mm waster hole	Each	45.20	5.00	226.00
38	18.21	Providing and fixing uplasticated PVC connection pipe with brass ions:				
	18.21.2.1	15 mm nominal bore	Each	85.20	9.00	766.80

39	18.35	Constructing masonry chamber 120x120x100 cm inside, in brick work in cement mortar 1:4 (1 cement : 4 coarse sand) for sluice valve, with C.I. surface box of 100 mm top diameter, 160 mm bottom diameter and 180mm deep (inside) with chained lid and RCC top slab 1:2:4 mix (1 cement:2 coarse sand: 4 graded stone aggregate 20mm nominal size). i/c necessary excavation, foundation concrete 1:5:10 (1cement:5 fine sand:10 graded stone aggregate 40mm nominal size) and inside plastering with cement mortar 1:3 (1 cement:3 coarse sand) 12mm thick, finished with a floating coat of neat cement complete as per standard design:					
	18.35.1	With common burnt clay F.P.S. (non modular) bricks of class designation 100 A	Each	18,802.60		1.00	18802.60
40	18.77	Cutting holes up to 15x15 cm in R.C>C. floors and roofs for passing drain pipe etc. and repairing the hole after insertion of drain pipe etc. with cement concrete 1:2:4 (1 cement : 2 coarse sand : 4 graded stone aggregate 20 mm nominal size), including finishing complete so as to make it leak proof.	Each	217.10		7.00	1519.70
41	18.78	Making chases up to 7.5 x 7.5 cm in walls including making good and finishing with matching surface after housing G.I. pipe etc.	Meter	85.40		30.00	2562.00
42	19.1	Providing , laying and jointing glazed stoneware pipes class SP-1 with stiff mixture of cement mortar in the proportion of 1:1 (1 cement: 1 fine sand) including testing of joints etc. complete:					
	19.1.1	100mm diameter	Meter	280.60		60.00	16836.00
43	19.5	dismantling of old S.W. pipes including breaking of joints and ned concrete stacking of useful materials near the site within 50 m lead and disposal of umserviceable materials into muncipal dumps:					
	19.5.1	100 mm diameter	Meter	35.40		12.00	424.80
44	19.19	Providing and fixing in position pre-cast R.C.C. manhole cover and frame of required shape and approved quality					
	19.19.1.1	Rectangular shape 600x450 mm internal dimensions	Each	1,120.60		1.00	1120.60
45	17.38	Providing and fixing bend of required degree with access door, inserction rubber washer 3 mm thick, bolts and nuts complete.					
	17.38.1.1	Sand cast iron S&S as per IS - 1729	Each	597.60		6.00	3585.60
46	17.39	Providing and fixing plain bend of required degree.					
	17.39.1	100mm diameter					
	17.39.1.1	Sand cast iron S&S as per IS - 1729	Each	457.20		12.00	5486.40
47	17.43	Providing and fixing single equal plain junctionof required degree with access door, inserction rubber washer 3 mm thick, bolts and nuts complete.					
	17.43.1	100x100x100 mm					
	17.43.1.1	Sand cast iron S&S as per IS - 1729	Each	671.20		10.00	6712.00
48	17.60	Providing and fixing trap of self cleansing design with screw down or hinged grating with or without vent arm complete, including cost of cutting and making it good the wall and floors:					
	17.60.1.1	Sand cast iron S&S as per IS - 3989	Each	1,129.20		5.00	5646.00
49		For Chemical/Minral Earthing					
	2317	Copper coated earth ROD of 3m long and 17.2 mm dia outer dia	Each	5,500.00	1	1.00	5500.00
	2318	Stainless steel rod/cable clamp	Each	750.00	1	1.00	750.00
	2319	25 kg backfill mineral compound	Each	1,950.00	1	1.00	1950.00
	2320	Under floor earth inspection pit	Each	2,499.00	1	1.00	2499.00
	2325	450 mm , 230V, A.C. Exhaust Fan	Each	4,700.00	1	1.00	4700.00
50		Wiring					
	1.1	Wiring for light point/fan point/call bell point with 1.5 sq. mm FRLS PVC insulated copper conductor single core cable in surface/recessed medium call PVC conduit with modular switches, modular plate, suitable size G.I. box etc as required					
	1.1.3	Group 'c'	Point	1,146.00		78.00	89388.00
		4 x 6 sq. mm + 1x6 sq. mm earth wire	Meter	660.00		30.00	19800.00

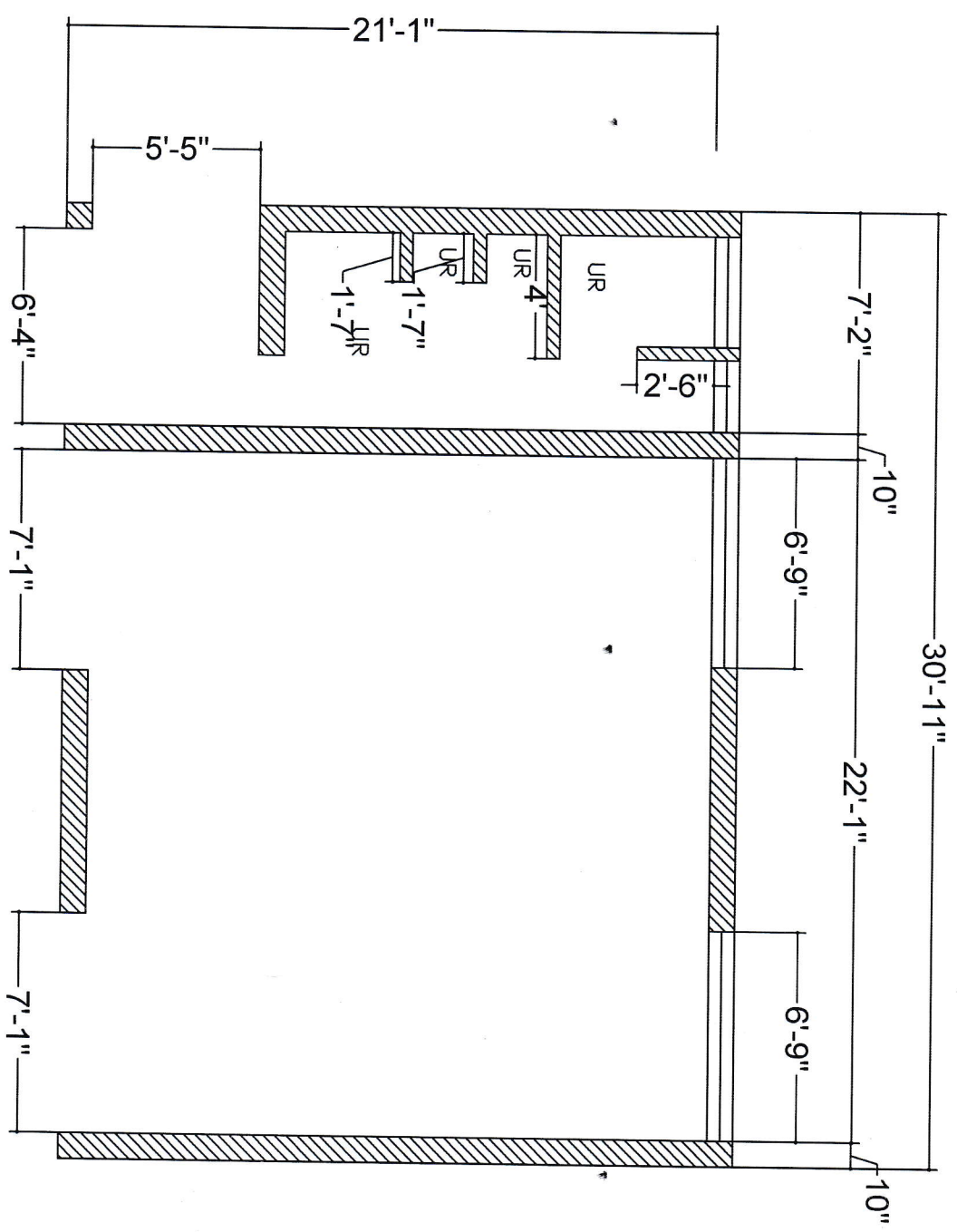
51	1.17	Supplying and drawing co-axial TV cable RG-6 grade, 0.7 mm solid copper conductor PE insulated, shielded with fine tinned copper braid and protected with PVC sheath in the existing surface/ recessed PVC conduit as required	Meter	42.00		100.00	4200.00
52	1.5	Installation of exhaust fan in the existing opening, including making good the damage, connection, testing, commissioning etc, as required.					
	1.50.1	UPTO 450 mm	Each	296.00		1.00	296.00
	1.51	Extra for fixing the louvers/ shutters complete with frame for a exhaust fan of all sizes	Each	129.00		1.00	129.00
53	2.18	Supplying and fixing following rating, four pole, (three phase and neutral), 415 volts, residual current circuit breaker (RCCB), having a sensitivity current upto 30 milliamperes in the existing MCB DB complete with connections, testing and commissioning etc. as required.					
	2.18.2	40 Amps	Each	3,348.00		1.00	3348.00
54	3.13	Supplying and laying earth connection from earth electrode with 4.00 mm dia copper wire in 15 mm dia G.I. pipe from earth electrode including connection with copper thimble excavation and refilling etc. as required.	Meter	278.00		20.00	5560.00
55	5.7	Supplying and fixing recess mounted following types LED downlighter with minimum efficacy 100 lm/w in pressure die-cast aluminium housing and integrated electronic driver etc directly on ceiling including connections with 1.5 sq.mm FRLS PVC insulated copper conductor cable etc as require.					
	5.7.3	12 watt	Each	1,224.00		6.00	7344.00
56	5.9	Supplying and fixing recess mounted 36 watt Led flat panel (2' x 2') with minimum efficacy 100 lm/w which provides soft light and glare free symmetrical illumination suitable for armstrong/grid ceiling and integrated electronic driver etc directly on false ceiling including connections with 1.5 sq.mm FRLS PVC insulated copper conductor cable etc as required.	Each	2,663.00	8	8.00	21304.00
57	2.1	Supplying and fixing following ways, surface/ recess mounting, vertical type, 415 volts, TPN, MCB distribution board of sheet steel, dust protected, duly powder painted, inclusive of 200 amp tinned copper bus bar, common neutral link, earth bar, din bar, for mounting MCB's (but without MCB's and incomer) as required. (Note: vertical type MCB TPDB is normally used where 3 phase outlets are required)					
	2.10.3	12 way (4+36), double door, Vertical type	Each	13,572.00	1	1.00	13572.00
58	11.1.2	Non Residential Building :-					
		Group 'c' for non-residential buildings such as offices, hospitals, high court, education institution, libraries, laboratories, prisoner ward and honourable government house, honourable chief justice house, honourable chief minister house etc.					
		Group 'c' for non-residential buildings such as offices, hospitals, high court, education institution, libraries, laboratories, prisoner ward and honourable government house, honourable chief justice house, honourable chief minister house etc.					

59	26.23	Providing and fixing false ceiling at all heights with integral densified calcium silicate reinforced with fibre and natural filler false ceiling tiles of size 595x595 mm of approved texture, design and pattern having NRC (Noise reduction coefficient) of 0.50 (minimum) as per IS 8225:1987, light reflectance of 85% (minimum). Non combustible as per BS: 476 (part-4), fire performance as per BS:476 (part 6 7 7), humidity resistance of 100%, thermal conductivity < 0.043 W/m K as per ASTM 518:1991, in true horizontal level suspended on interlocking metal powder coated T-grid of hot dipped galvanised iron section of 0.40 mm thick silhouette profile, rotary stiched double webbed white with 6 mm reveal profile (white/black) comprising of main T runners of size 15x42 mm of length 3000 mm, cross - T of size 15x42 mm of length 1200 mm and secondary intermediate cross -T of size 15x42mm of length 600 mm to form grid module of size 600x600 mm, suspended from ceiling using galvanised mild steel items (galvanising @ 80 grams per sqm) i.e. 50 mm long, 8 mm outer diameter M-6 dash fasteners, 6 mm dia fully threaded hanger rod upto 1000 mm length and l- shape level adjuster of size 85x25x2 mm. Galvanised iron perimeter wall angle of size 22x19x0.40 mm of length 3000 mm to be fixed on periphery wall/partition with the help of plastic rawl plugs at 450 mm center to center and 40 mm long dry wall s.s screws. The work shall be carried out as per specifications, drawing and as per directions of Engineer-in-Charge.p					
	26.23.1	With 15mm thick integral densified micro edge light weight calcium silicate false ceiling tiles	SQM	1,812.40		61.90	112187.56
60	26.86	Providing and fixing factory made single extruded WPC (wood polymer composite) solid door/window/ceosetory windows & other frame/chowkhat comprising if virgin PVC polymer of K value 58-60 (suspension grade), calcium carbonate and natural fibers (wood powder/rice husk/wheat husk) and non toxic additives (maximum toxicity index of 12 for 100gms) fabricated with miter joints after applying PVC solvent cement and screwed with full body threaded star headed SS screws having minimum frame density of 750kg/cum, screw withdrawk strength of 2200 N (face) & 1100 N (edge), minimum compressive strangth of 58 N/mm, modulus of elasticity 900 N/mm and resistance to spread of frame of class A category with property of being termite/borer proff, water/moisture proof and fire retardent and fixed in position with M.S hold fast/lugs/SS dash fasteners of required dia and length complete as per direction of Engineer-in-Charge. (M.S hold fast/lugs or SS dash fasteners shall be paid for separately).					
	26.86.5	Frame size 65x100mm	M	935.40		19.65	18380.61
61	26.88	Providing and fixing factory made single extruded WPC (wood polymer composite) solid door/window/ceosetory windows & other frame/chowkhat comprising if virgin PVC polymer of K value 58-60 (suspension grade), calcium carbonate and natural fibers (wood powder/rice husk/wheat husk) and non toxic additives (maximum toxicity index of 12 for 100gms) having minimum density of 650 kg/cum and screw withdrawl strength of 1800 N (face) & 900 N (edge), minimum compressive strangth 50 N/mm, modulus of elasticity 850 N/mm and resistance to spread of frame of class A catagory with property of being termite/borer proof, water/moisture proof and fire retardant. WPC to be laminated with PVC foil of minimum 14 microns thick of approved design pasted PVC with hot melt adhesive on both faces of shutter and fixing with stainless steel butt hinges of required size with necessary full body threaded star headed counter sunk 5.5 screws, all as per direction of Engineer-in-Charge. {Note: stainless steel butt hinges and necessary 5.5 Screws shall be paid separately)					

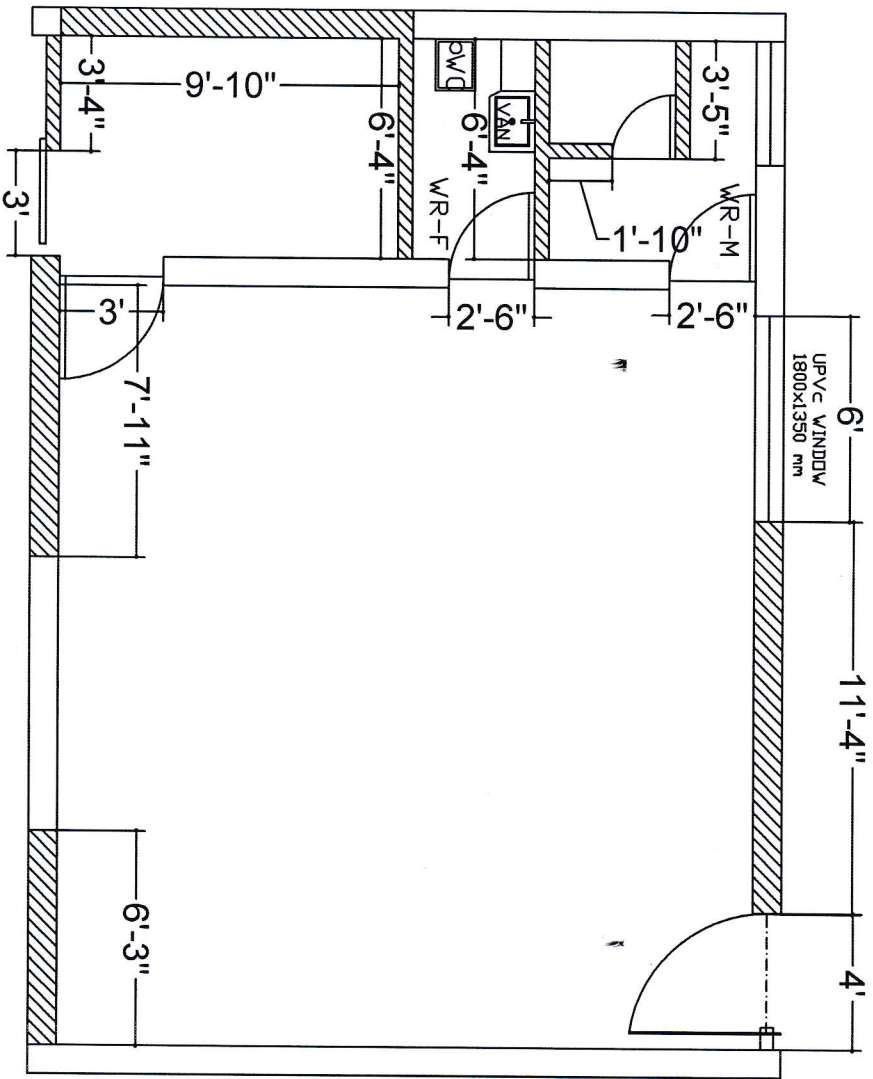
	26.88.2	35 mm thick	SQM	4,803.10		12.41	59606.47
		Total				A	Rs. 8,93,434.36
		Carriage of Materials					
		Graded Stone aggregate 155 km.	Cum.	3794.740		2.02	7665.37
		Coarse sand 40km.	Cum.	1152.500		8.49	9784.73
		Bricks 8km	‰	1053.350		5.78	6088.36
		Reinforcement (Steel)	Tonne	492.750		0.07	32.52
		Cement	Tonne	492.750		4.05	1995.64
		Bricks [MUZAFFER PUR]	‰	359.040		5.78	2075.25
		Cement [MUZAFFER PUR]	Tonne	231.550		4.05	937.78
		Total carriage & cost difference				B	28579.65
		Total cost (A+B)			R.O.		922014.01
		Add 5.36% G.S.T. as per PWD notification on Total cost that is Rs.			R.O.		49419.95
Grand Total Amount							9,71,433.96
Nine Lac Seventy One Thousand four Hundrad and Thirty Three Only							9,71,433.96
		I AGREE TO DO THIS WORK:					IN WORD
1		ON THE BOQ RATE:					
2		BELOW THE GIVEN RATE (IN %)					
3		ABOVE THE GIVEN RATE (IN%)					
SIGNATURE OF CONTRACTOR							


 05/09/2024

EXISTING BUILDING PLAN FOR CONFERENCE HALL AT SUDHA DAIRY, HAJIPUR
 CONSULTANT: RAJESH MANRAY
 DESIGNED BY: DESIGN EDGE, PATNA
 DATE: 21.08.2024
 DESIGN NO: PDP/HAJ/01



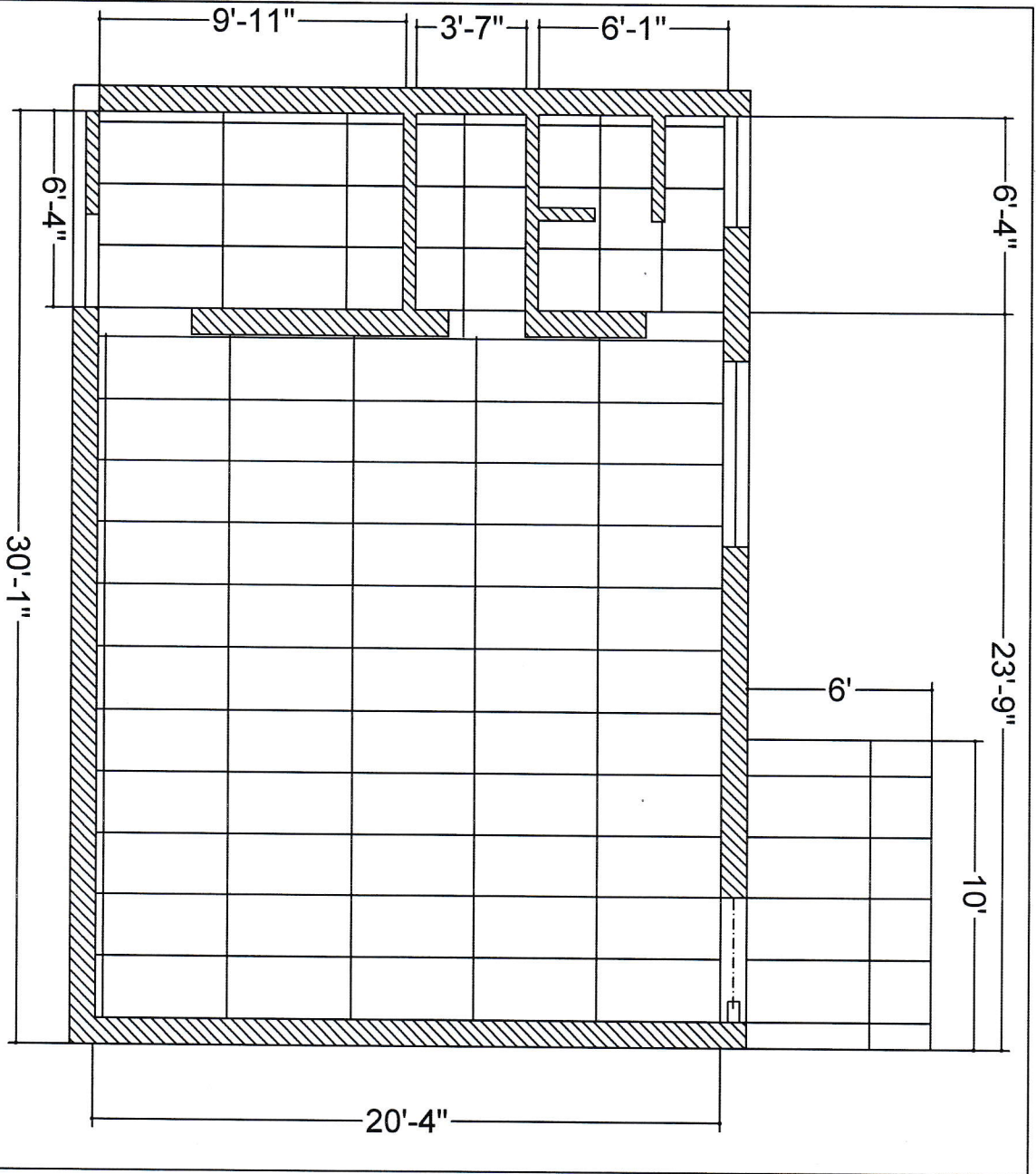
Red



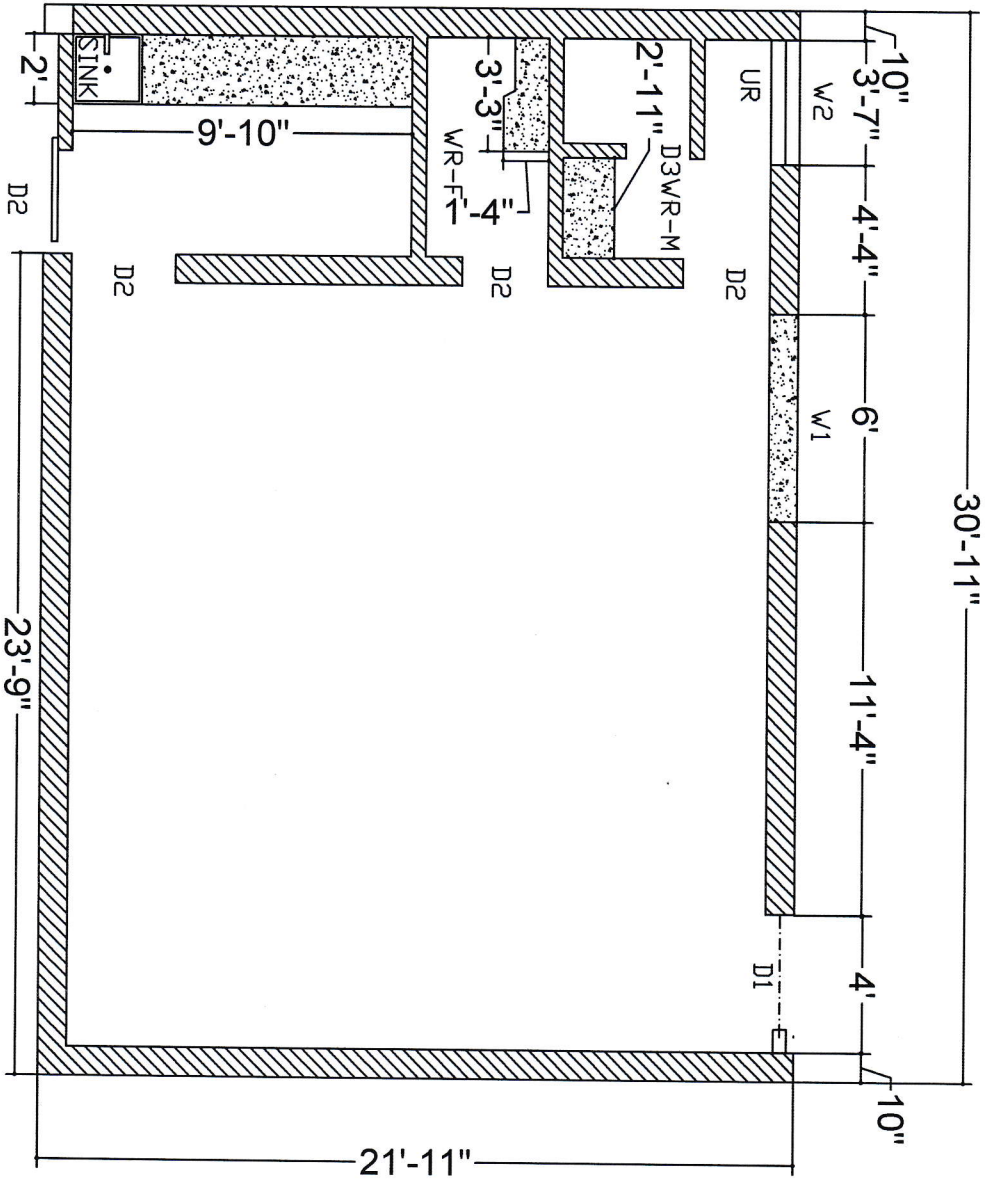
MODIFIED PROPOSED PLAN FOR NEW WALLS, DOORS & WINDOWS FOR CONFERENCE HALL AT SUDHA DAIRY,
 GUNBURMANNI, RAJEEV NAGRAV
 DESIGNED VIA DESIGN EDGE, PATAHA
 DATE: 21/08/2024
 DESIGN NO: PDP/HAL/02

Red

PROPOSED TILES FLOORING PLAN FOR CONFERENCE HALL AT SUDHA DAIRY, HAJIPUR
CONSULTANT : RAJEEV MANRAV
DESIGNED BY : DESIGN EDGE, PATNA
DATE : 21.08.2024
DESIGN NO. : PDP/HAJ/03

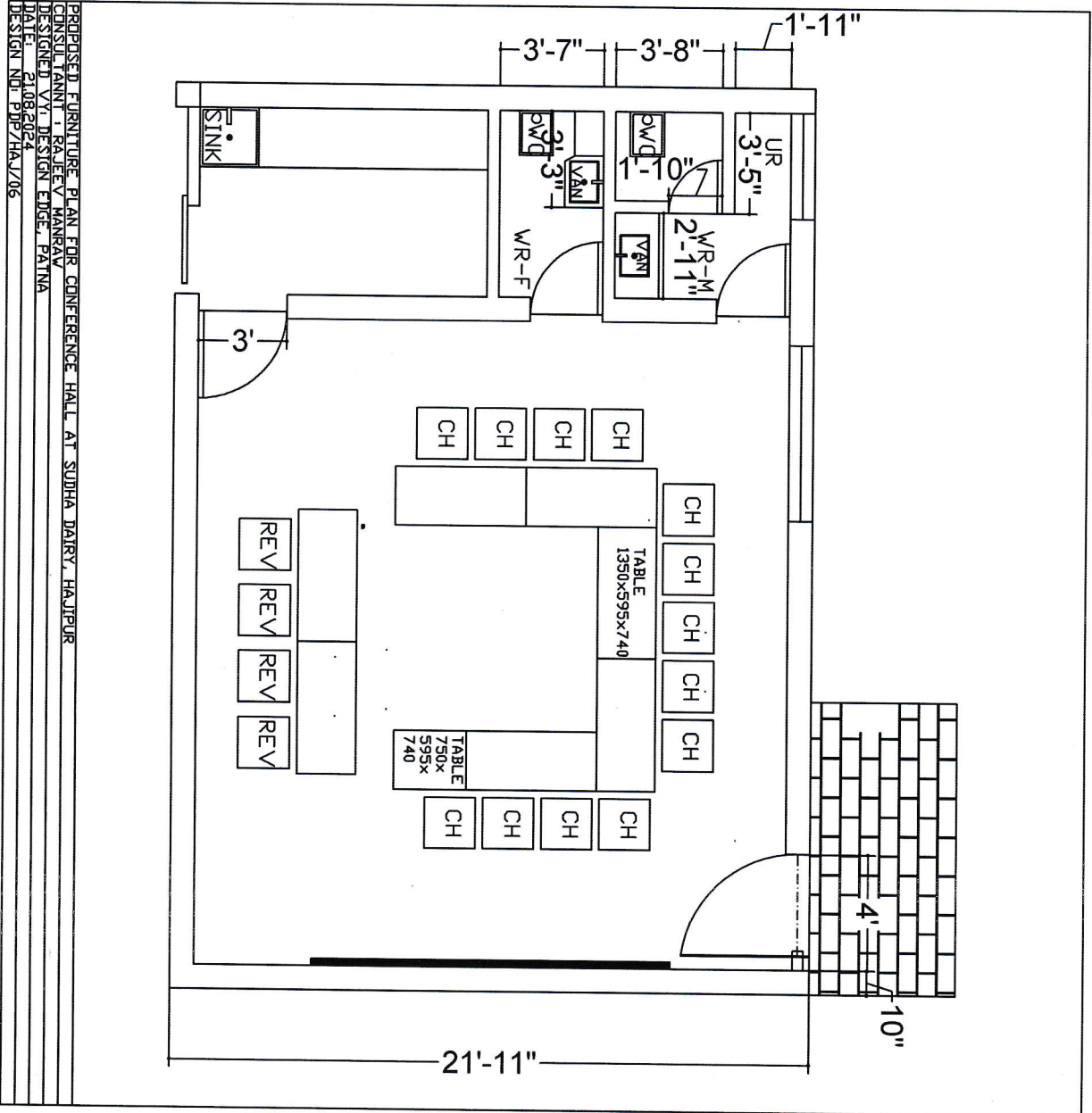


Raj



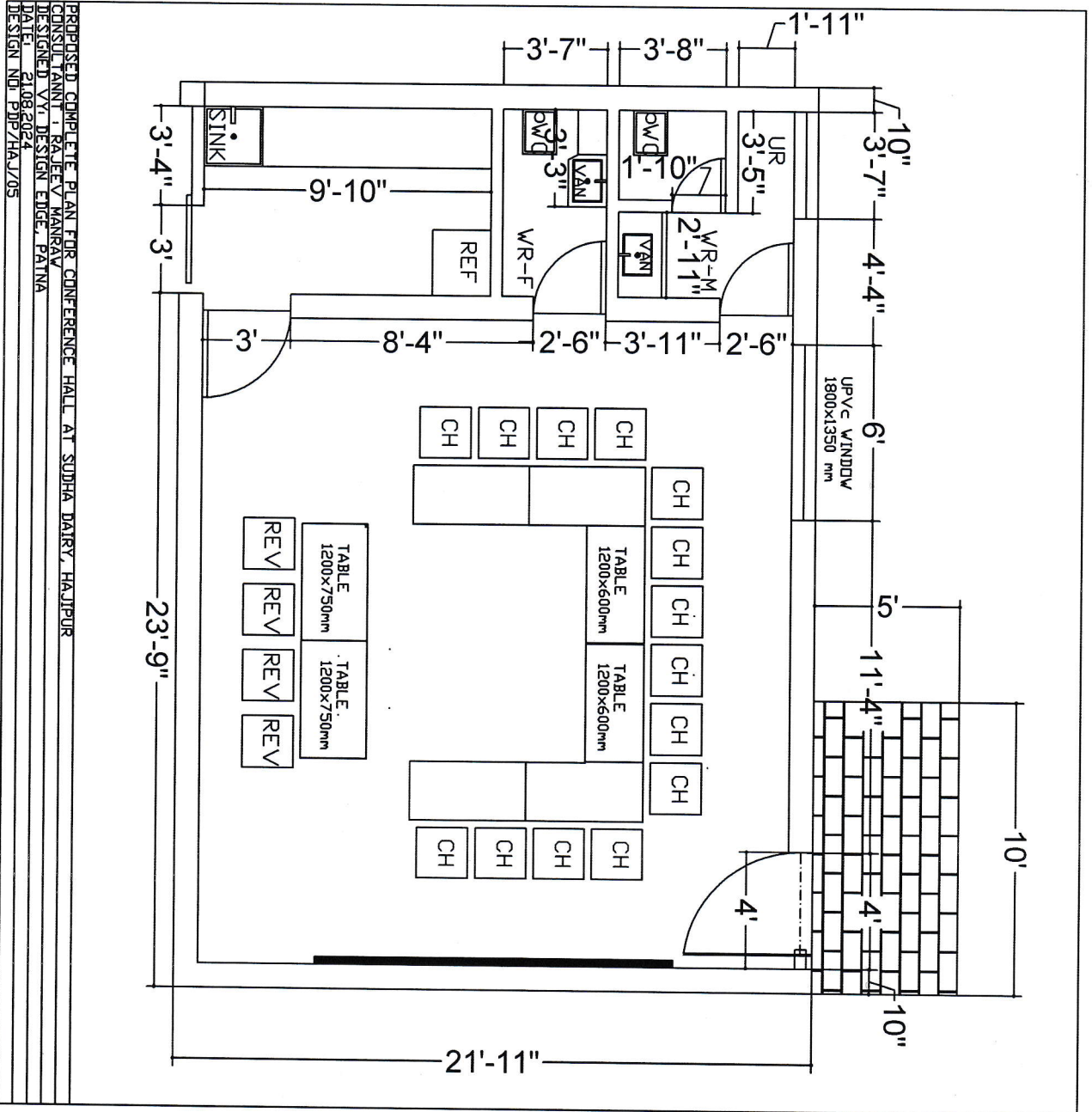
PROPOSED GRANITE WORK ON SLAB FOR CONFERENCE HALL AT SUDHA DAIRY, HAJIPUR
 CONSULTANT: RAJEEV MANRAY
 DESIGNED BY: DESIGN EDGE, PATNA
 DATE: 21.08.2024
 DESIGN NO: PDP7HAJ/04

(Signature)



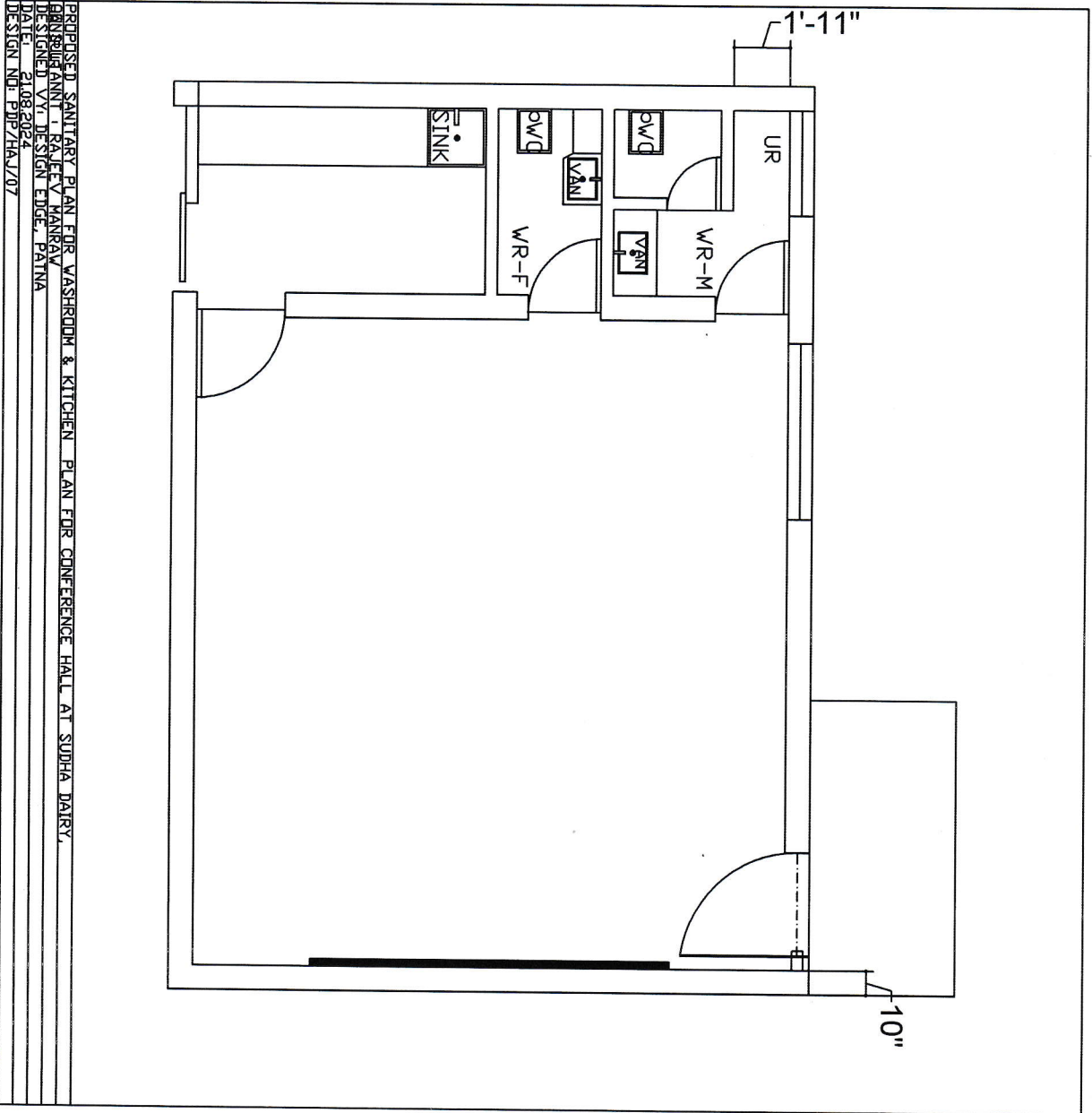
PROPOSED FURNITURE PLAN FOR CONFERENCE HALL AT SUDHA DAIRY, HAUJPUR
 CONSULTANT : RAJEEV MANRAV
 DESIGNED BY DESIGN EDGE, PATNA
 DATE: 21.08.2024
 DESIGN NO: PDP/HAJ/06

Rajeev



PREPARED COMPLETE PLAN FOR CONFERENCE HALL AT SUDHA DAIRY, HAJIPUR
 CONSULTANT: RAJEEV MANRAV
 DESIGNED BY: DESIGN EDGE, PATNA
 DATE: 21.08.2024
 DESIGN NO: BDP/HAJ/05

Handwritten signature



PROPOSED SANITARY PLAN FOR WASHROOM & KITCHEN PLAN FOR CONFERENCE HALL AT SUBHA DAIRY.
 ENGINEER/ANNI T. RAJEEV MANRAY
 DESIGNED BY DESIGN EDGE, PATNA
 DATE: 21.08.2024
 DESIGN NO: PDP/HAJ/07

Red

